

AMERICAN BRIDGE

UNITED STATES STEEL COMPANY

DRAWING WITH BILL

ORDERED

ITEM

REMARKS

ASSEMBLING

MARK

SHAPE

LENGTH

NO. OF

PIECES

LINE

1

2

3

4

5

6

7

8

9

10

11

12

13

14

15

16

17

18

19

20

21

22

23

24

25

26

27

28

29

30

31

32

33

34

35

36

37

38

39

40

41

42

43

44

45

46

47

48

49

50

51

52

53

54

55

56

57

58

59

60

61

62

63

64

65

66

67

68

69

70

71

72

73

74

75

76

77

78

79

80

81

82

83

84

85

86

87

88

89

90

91

92

93

94

95

96

97

98

99

100

101

102

103

104

105

106

107

108

109

110

111

112

113

114

115

116

117

118

119

120

121

122

123

124

125

126

127

128

129

130

131

132

133

134

135

136

137

138

139

140

141

142

143

144

145

146

147

148

149

150

151

152

153

154

155

156

157

158

159

160

161

162

163

164

165

166

167

168

169

170

171

172

173

174

175

176

177

178

179

180

181

182

183

184

185

186

187

188

189

190

191

192

193

194

195

196

197

198

199

200

201

202

203

204

205

206

207

208

209

210

211

212

213

214

215

216

217

218

219

220

221

222

223

224

225

226

227

228

229

230

231

232

233

234

235

236

237

238

239

240

241

242

243

244

245

246

247

248

249

250

251

252

253

254

255

256

257

258

259

260

261

262

263

264

265

266

267

268

269

270

271

272

273

274

275

276

277

278

279

280

281

282

283

284

285

286

287

288

289

290

291

292

293

294

295

296

297

298

299

300

301

302

303

304

305

306

307

308

309

310

311

312

313

314

315

316

317

318

319

320

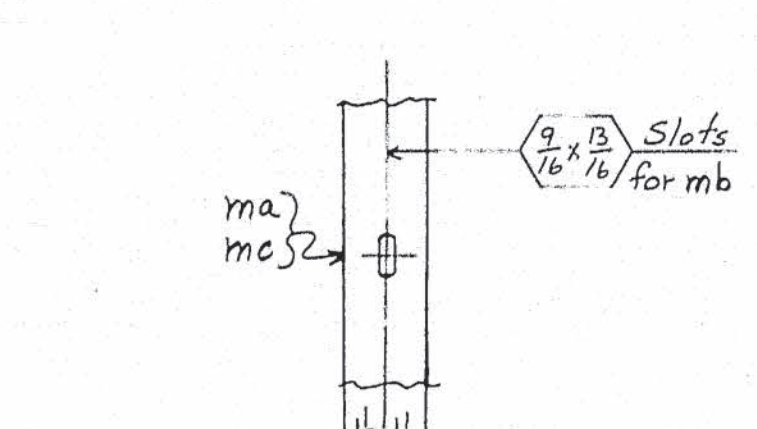
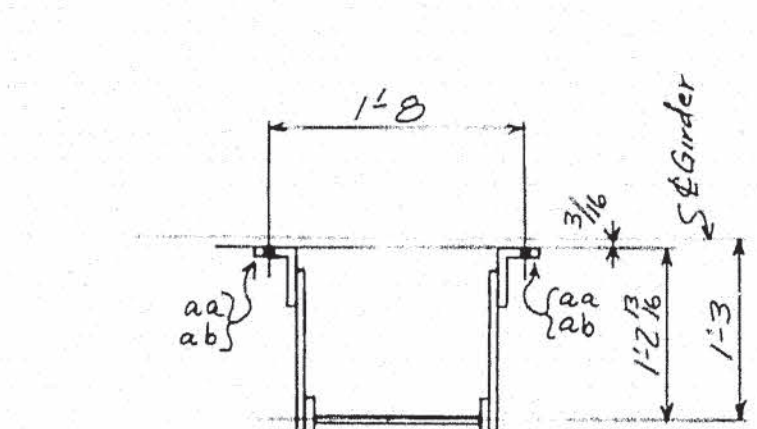
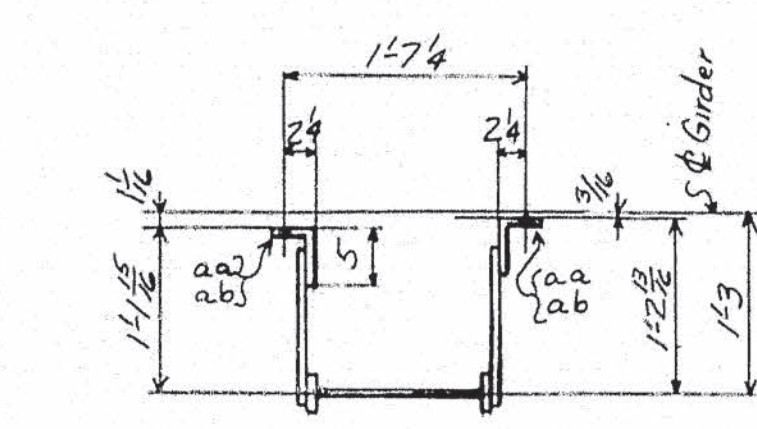
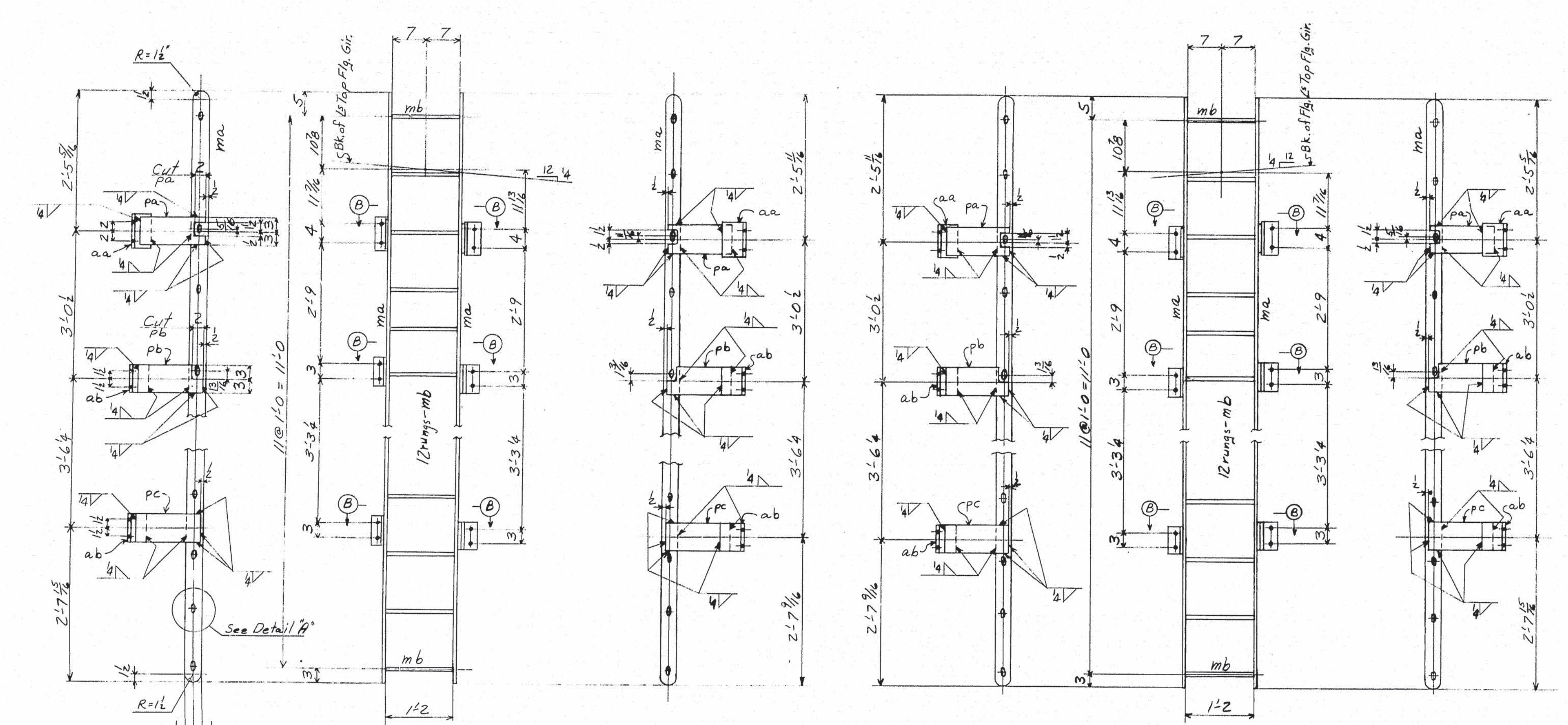




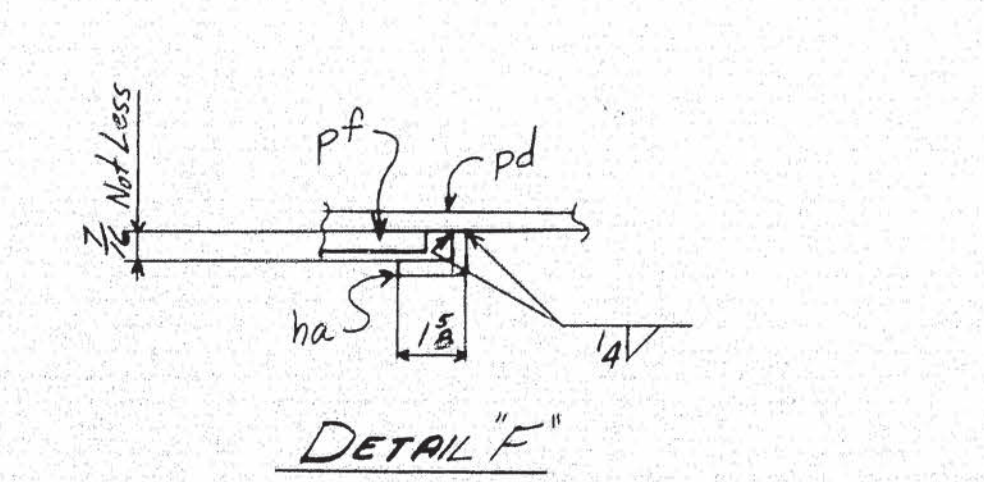
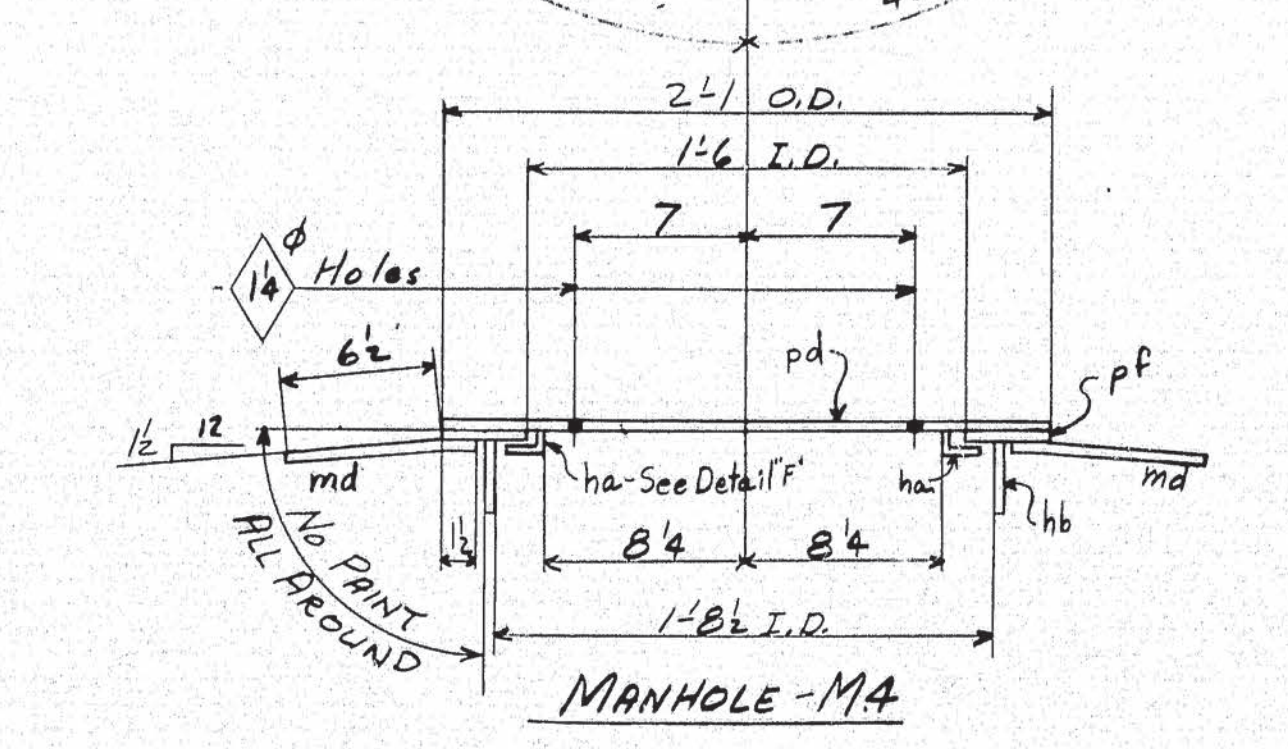
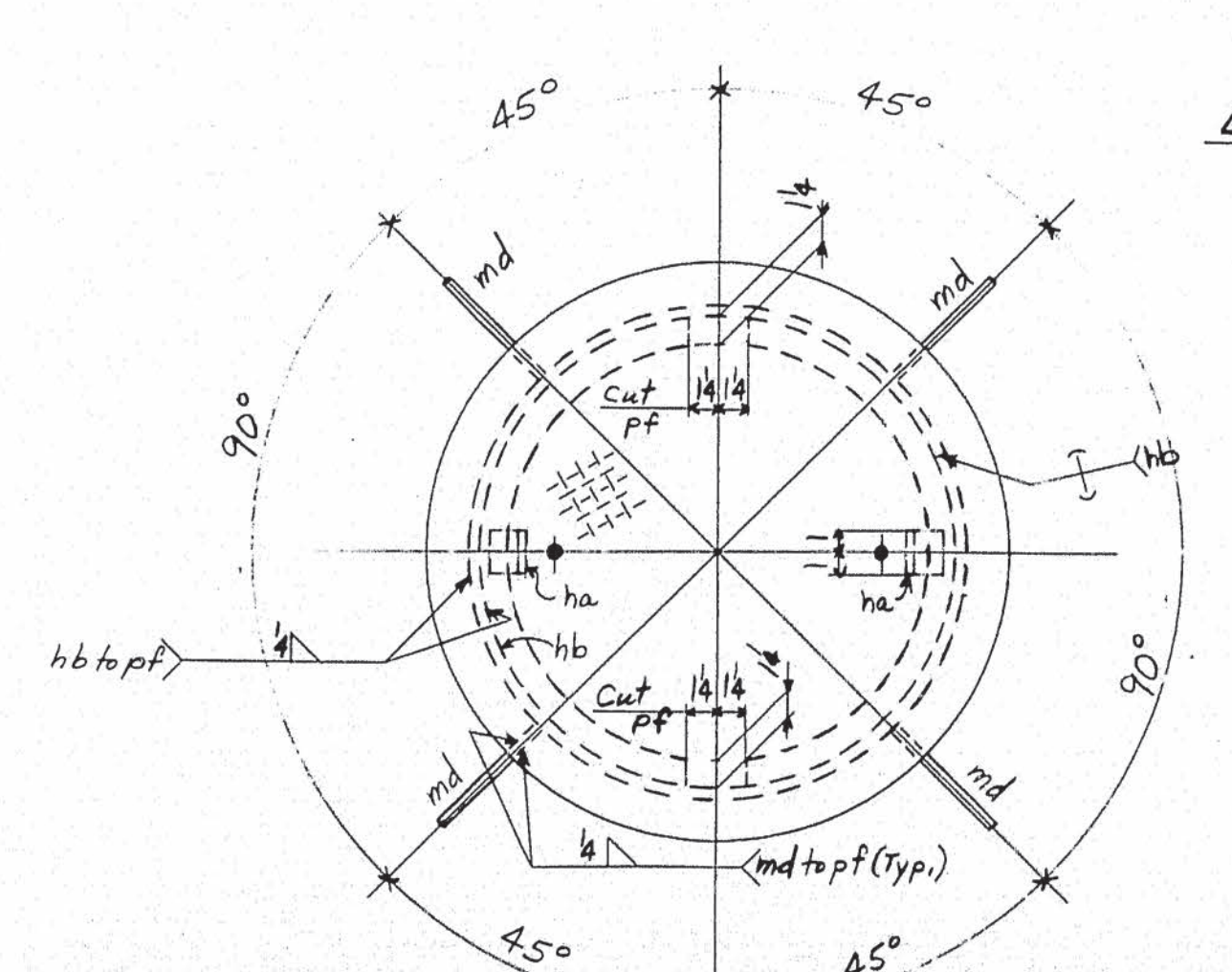
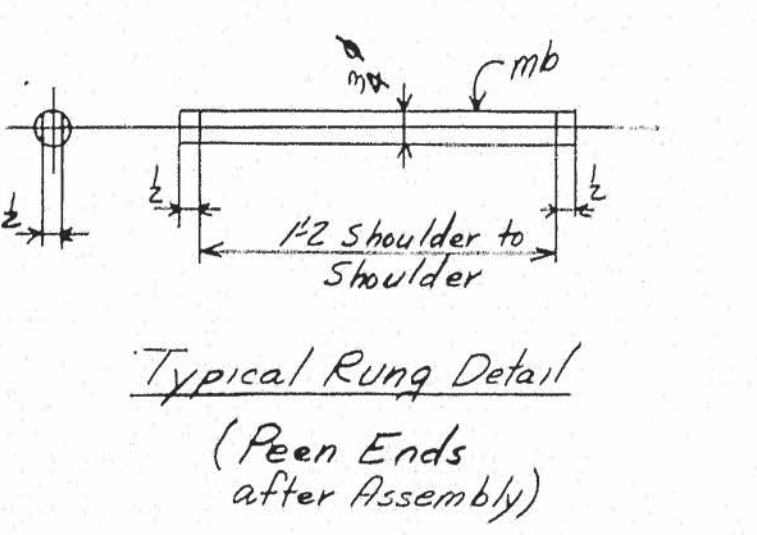


AMERICAN BRIDGE COMPANY

LINE	ITEM	SHAPE	LENGTH	ASSEMBLING MARK	REMARKS	ORDERED	ITEM	WEIGHT	FOR ONE SHIP
1									
2									
3									
4									
5									
6	2 LADDERS	L1						195	
7									
8	4 Bars	3 3/4	11 8	ma				88	
9	24 Rods	3/4	1 3	mb				23	
10	4 L	5 3/4	7	aa				12	
11	20 R	5 3/4	6	ab				21	
12	8 R	6 3/4	1 1	pa				15	
13	16 R	6 3/4	1 1	pb				15	
14	8 R	6 3/4	1 1	pc				17	
15								3	
16									
17	2 LADDERS	L2						195	
18									
19	4 Bars			ma				88	
20	24 Rods			mb				23	
21	4 L			aa				12	
22	8 L			ab				21	
23	4 R			pa				15	
24	4 R			pb				15	
25	4 R			pc				17	
26								3	
27									
28	2 LADDERS	L3						136	
29									
30	4 Bars	3 3/4	8 7	mc				65	
31	18 Rods			mb				17	
32	4 L			aa				12	
33	4 L			ab				10	
34	8 R			pb				29	
35								2	
36	4 MANHOLES	M4						104	
37									
38									
39	4 Chd R	25 3/8	2 1	pd	S300			56	
40	4 R	25 3/8	2 1	pf				27	
41	8 R	2 1/4	2 1/4	ha	Bent			1	
42	4 R	3 1/4	5 5/8	hb	Bent			15	
43	16 Rods	3/4	8	md	Bent			2	
44								3	
45									
46									
47									
48									
49									
50									
51									
52									
53									
54									
55									
56									
57									
58									
59									
60									
61									
62									
63									
64									
65									
66									
67									



DETAIL A  
(Typical for all rung Conn.)



NOTES:  
SPECIFICATIONS - Maine State Highway Comm.  
1905 and Special Provisions  
MATERIAL - O.H. Steel - ASTM A7-52T  
HOLES - 3/4" Unless Noted  
PAINT - Yes, Except as noted  
Shop Contact Surfaces - No

LADDERS & MANHOLES  
STATE OF MAINE  
STATE HIGHWAY COMMISSION  
BANGOR-BREWER BRIDGE  
OVER PENOBSCOT RIVER  
BANGOR, MAINE

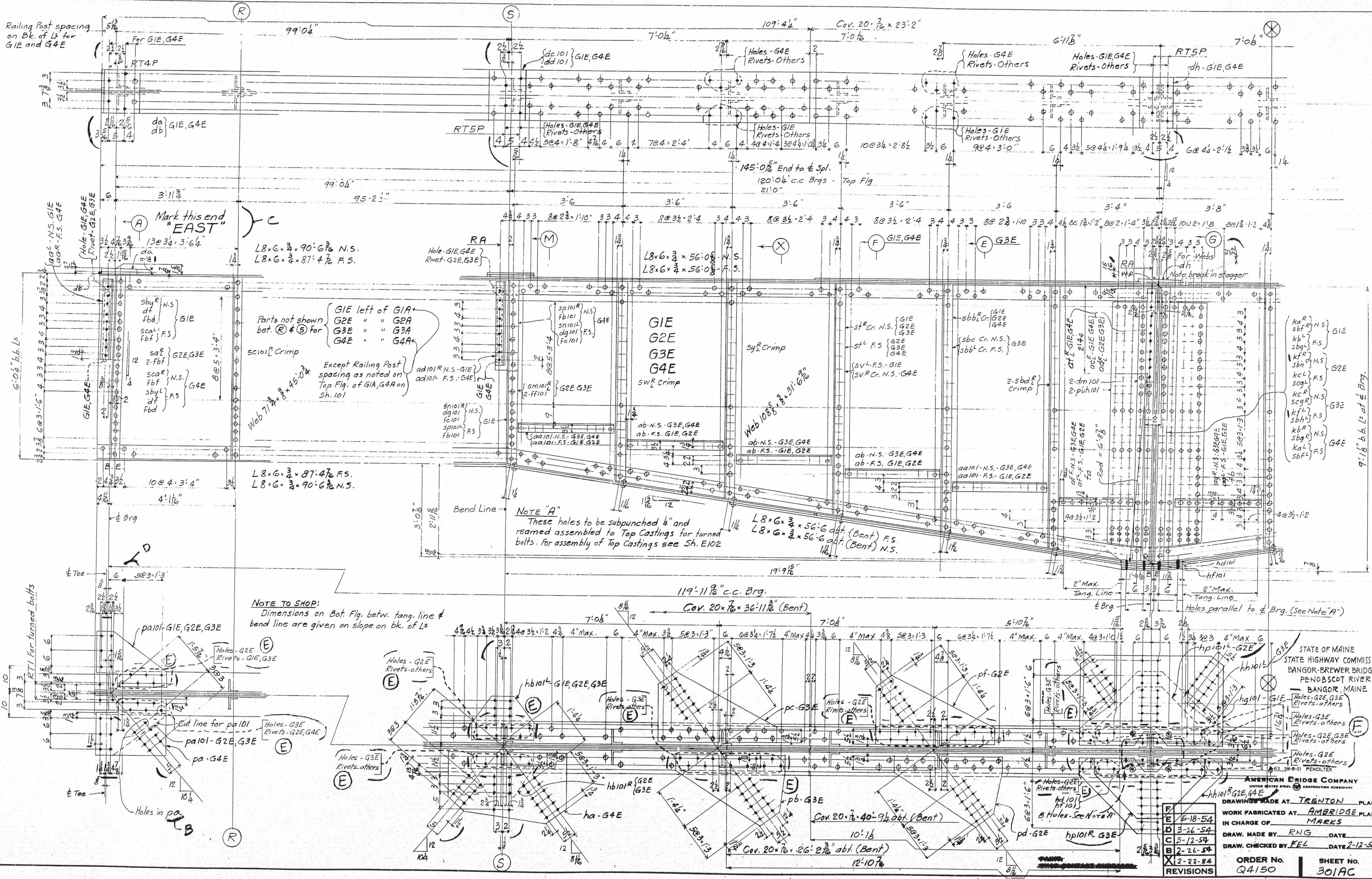
AMERICAN BRIDGE COMPANY  
UNITED STATES STEEL CORPORATION SUBSIDIARY

DRAWINGS MADE AT Trenton PLANT  
WORK FABRICATED AT Ambridge PLANT  
IN CHARGE OF E.B. Marks  
DRAW. MADE BY PRY DATE 2-16-54  
DRAW. CHECKED BY FEL DATE 2-18-54  
ORDER No. Q4150 SHEET No. 202

AM. BN 203

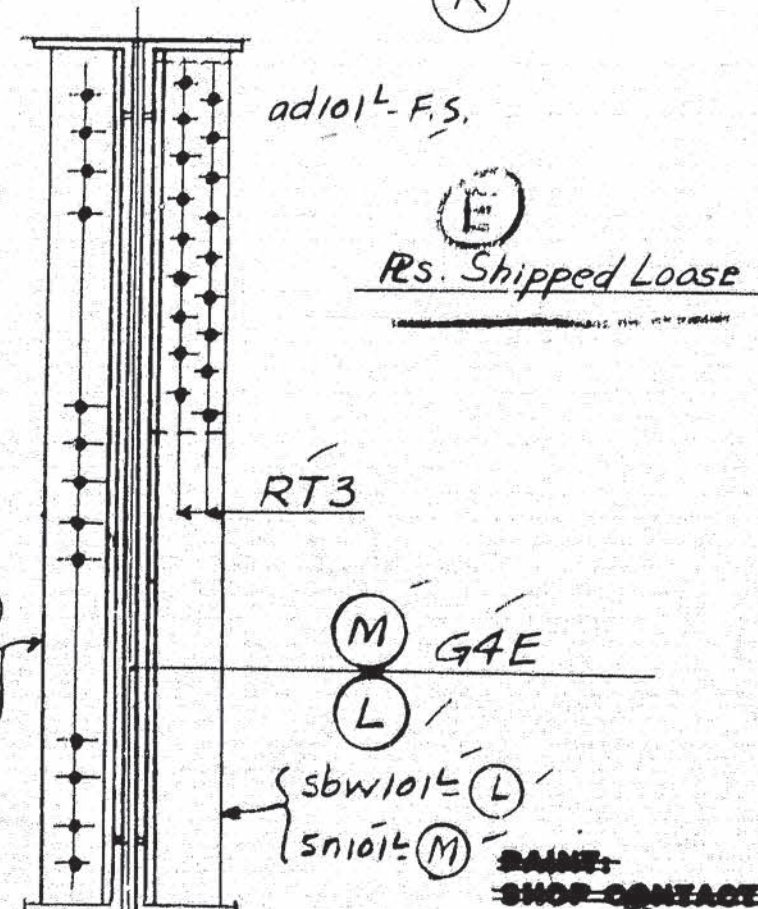
Welding  
62-186





DRAWINGS MADE AT TRENTON PLANT	
WORK FABRICATED AT AMBRIDGE PLANT	
IN CHARGE OF MARKS	
DRAW. MADE BY RNG DATE	
DRAW. CHECKED BY FEL DATE 2-12-54	
ORDER No. Q4150	
SHEET No. 301AC	
Weld	





F			
E	18-54		
D	3-12-54		
C	3-4-54		
B	2-16-54		
X	2-22-54		
REVIEWS			

STATE HIGHWAY COMMISSION  
BANGOR - BREWER BRIDGE  
PENOBSCOT RIVER  
BANGOR, MAINE

DE 1500-9-51 PERCHLTEX  
**AMERICAN BRIDGE COMPANY**  
 UNITED STATES STEEL CORPORATION SUBSIDIARY

DRAWINGS MADE AT TRENTON PLANT  
 WORK FABRICATED AT AMBRIDGE PLANT  
 IN CHARGE OF MARKS  
 DRAW. MADE BY RNG DATE \_\_\_\_\_  
 DRAW. CHECKED BY FEL DATE 7-12-54

ORDER NO. Q4150      SHEET NO. 301Bc

WELD  
62-188



# AMERICAN BRIDGE

UNITED STATES STEEL COMPANY

LINE	ITEM	SHAPE	LENGTH	ASSEMBLING	REMARKS	ORDERED	CALCULATED
1							
2							
3							
4	ONE GIRDER - G1E		60513	Do Not Charge			394.8
5	ONE GIRDER - G2E		59914				394.8
6	ONE GIRDER - G3E		60035				394.8
7	ONE GIRDER - G4E		60530	Do Not Charge			394.8
8							
9	4 Wd R 7/8 x 45 03		1	124.4528	1055		424.5
10	4 Wd R 7/8 x 43 105		1	124.4528	1057		413.2
11	4 Wd R 7/8 x 31 62		1000	124.4528	1049		358.9
12	4 Wd R 100 x 24 73		670	124.4528	1050		291.6
13	8 L 8 x 90 62		2	40.82	1047		611.7
14	8 L 8 x 87 47		2	87.47	1048		590.4
15	8 L 8 x 56 08		6	56.2	1011		378.3
16	8 L 8 x 56 60th		6	57.6	1010		381.3
17							
18							
19	3 Cov R 20 x 53 0			U.M. 2		1079	31.52
20	3 Cov R 20 x 48 112			U.M. 2		49.0	29.11
21	4 Cov R 20 x 77 3			U.M. 8		1081	229.0
22	4 Cov R 20 x 36 12			U.M. 80th		37.3	109.5
23	4 Cov R 20 x 23 2			U.M. 2		1083	688
24	4 Cov R 20 x 40 94th			U.M. 60th		41.1	120.9
25	4 Cov R 20 x 26 26th			U.M. 60th		26.6	77.5
26							
27							
28							
29	2 L 6 x 4 3/8		114	36.2	1040		209
30	4 L 6 x 4 3/8		106	23.10	1042		27.5
31							
32	6 L 5 x 3 3/8		103	40.0	1045		314
33	6 L 5 x 3 3/8		103	40.0	1045		314
34	6 L 5 x 3 3/8		103	40.0	1045		314
35	6 L 5 x 3 3/8		103	40.0	1045		314
36	6 L 5 x 3 3/8		103	40.0	1045		314
37	6 L 5 x 3 3/8		103	40.0	1045		314
38	6 L 5 x 3 3/8		103	40.0	1045		314
39	6 L 5 x 3 3/8		103	40.0	1045		314
40	6 L 5 x 3 3/8		103	40.0	1045		314
41	6 L 5 x 3 3/8		103	40.0	1045		314
42	6 L 5 x 3 3/8		103	40.0	1045		314
43	6 L 5 x 3 3/8		103	40.0	1045		314
44	6 L 5 x 3 3/8		103	40.0	1045		314
45	6 L 5 x 3 3/8		103	40.0	1045		314
46	6 L 5 x 3 3/8		103	40.0	1045		314
47	6 L 5 x 3 3/8		103	40.0	1045		314
48	6 L 5 x 3 3/8		103	40.0	1045		314
49	6 L 5 x 3 3/8		103	40.0	1045		314
50	6 L 5 x 3 3/8		103	40.0	1045		314
51	6 L 5 x 3 3/8		103	40.0	1045		314
52	6 L 5 x 3 3/8		103	40.0	1045		314
53	6 L 5 x 3 3/8		103	40.0	1045		314
54	6 L 5 x 3 3/8		103	40.0	1045		314
55	6 L 5 x 3 3/8		103	40.0	1045		314
56	6 L 5 x 3 3/8		103	40.0	1045		314
57	6 L 5 x 3 3/8		103	40.0	1045		314
58	6 L 5 x 3 3/8		103	40.0	1045		314
59	6 L 5 x 3 3/8		103	40.0	1045		314
60	6 L 5 x 3 3/8		103	40.0	1045		314
61	6 L 5 x 3 3/8		103	40.0	1045		314
62	6 L 5 x 3 3/8		103	40.0	1045		314
63	6 L 5 x 3 3/8		103	40.0	1045		314
64	6 L 5 x 3 3/8		103	40.0	1045		314
65	6 L 5 x 3 3/8		103	40.0	1045		314
66	6 L 5 x 3 3/8		103	40.0	1045		314
67	6 L 5 x 3 3/8		103	40.0	1045		314

LIFTING WEIGHT = 32 TONS

STATE OF MAINE  
STATE HIGHWAY COMMISSION  
BANGOR-BREWER BRIDGE  
PENOBSCOT RIVER  
BANGOR, MAINE

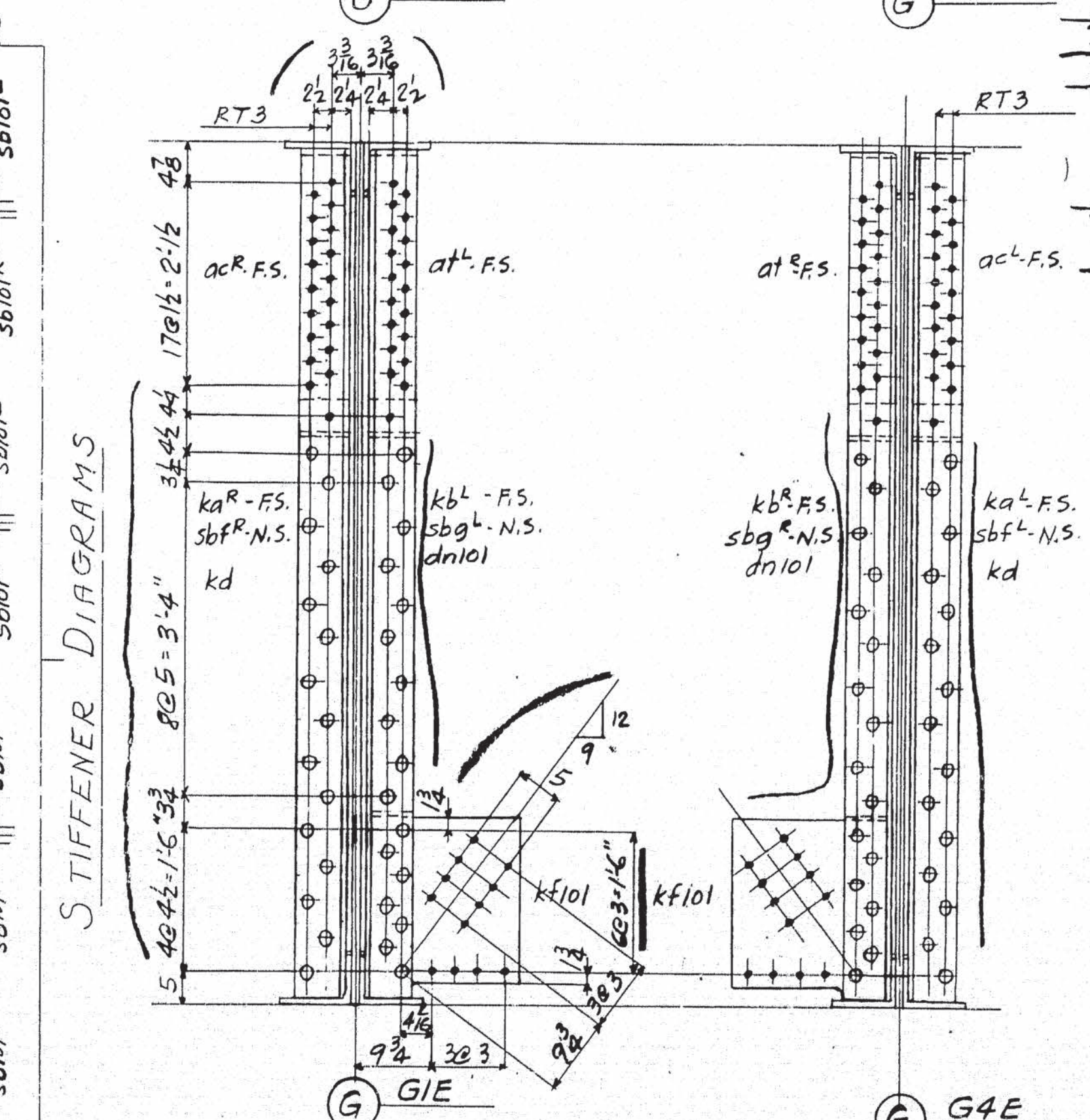
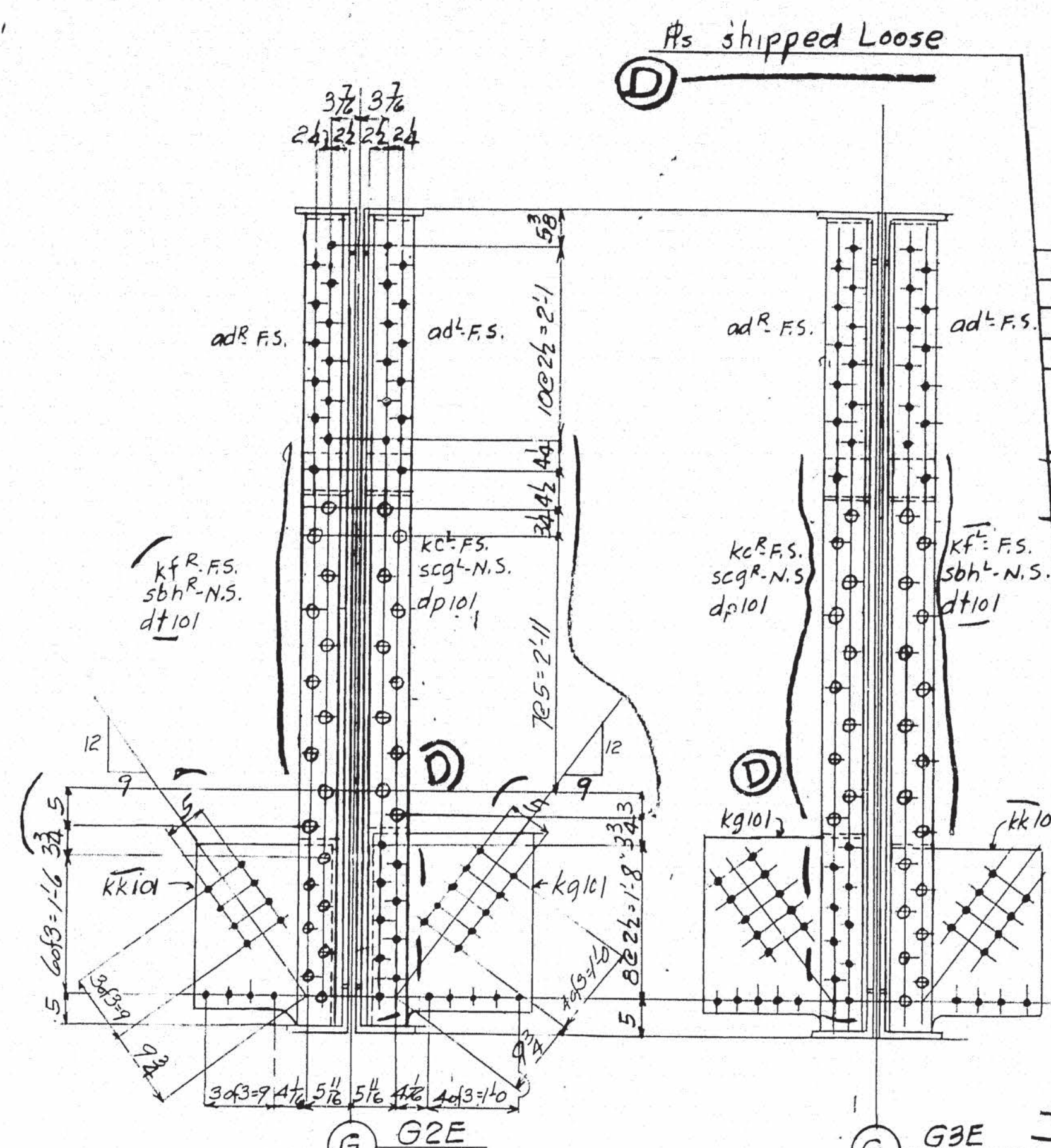
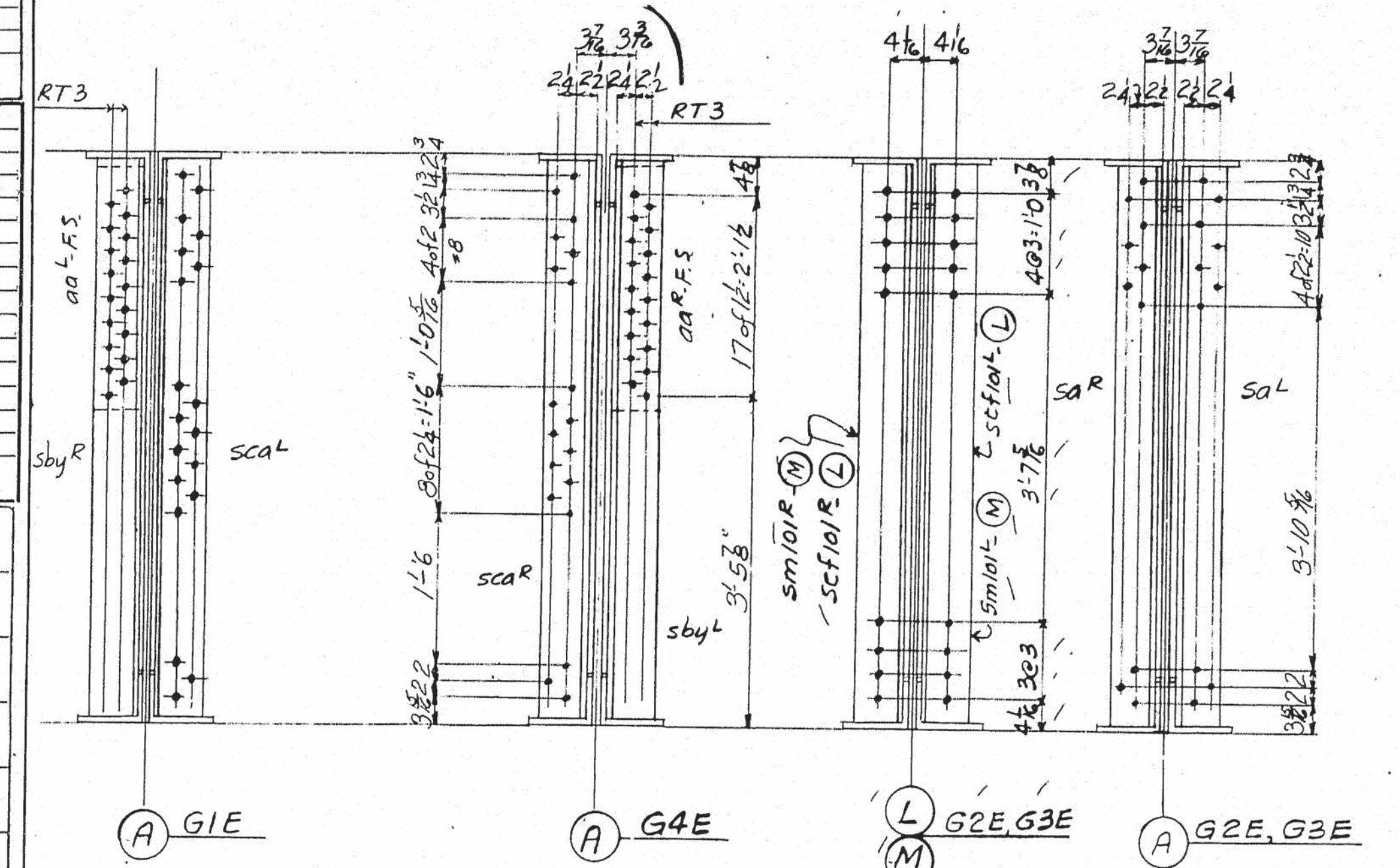
AMERICAN BRIDGE  
UNITED STATES STEEL COMPANY

DRAWINGS MADE AT IRONTON PLANT  
WORK FABRICATED AT AMBRIDGE PLANT  
IN CHARGE OF E.B. MARKS  
DRAWN BY R.N.G. DATE 9/29/53  
DRAW CHECKED BY FEL DATE 2-12-54  
ORDER NO. Q450 SHEET NO. 301C

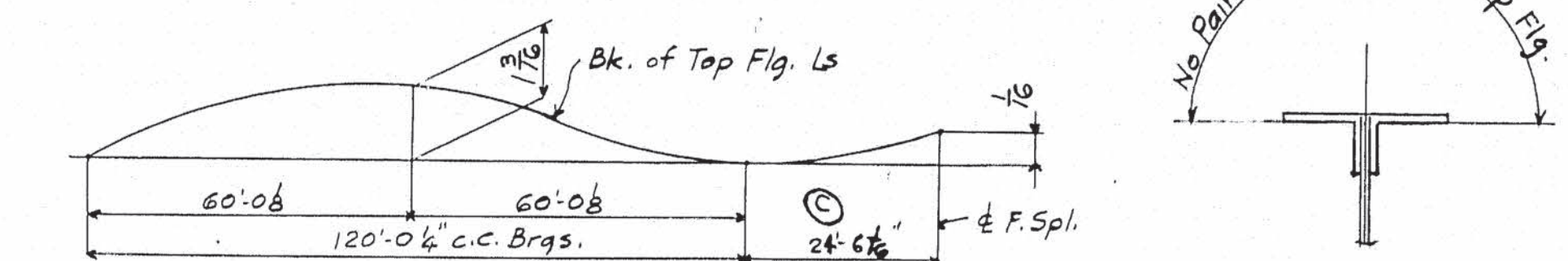
LINE	ITEM	SHAPE	LENGTH	ASSEMBLING	REMARKS	ORDERED	CALCULATED
68	2 L 6 x 4 3/8		20.103	1042			136
69	2 L 6 x 4 3/8		36.22	1040			210
70	3 PL 21 1/2 x 2 1/2		10				133
71	1 PL 22 1/2 x 2 1/2		10				46
72	1 PL 22 1/2 x 2 1/2		10				38
73	1 PL 22 1/2 x 2 1/2		10				34
74	1 PL 22 1/2 x 2 1/2		10				34
75	1 PL 22 1/2 x 2 1/2		10				34
76	1 PL 22 1/2 x 2 1/2		10				34
77	1 PL 22 1/2 x 2 1/2		10				34
78	1 PL 22 1/2 x 2 1/2		10				34
79	1 PL 22 1/2 x 2 1/2		10				34
80	1 PL 22 1/2 x 2 1/2		10				34
81	1 PL 22 1/2 x 2 1/2		10				34
82	1 PL 22 1/2 x 2 1/2		10				34
83	1 PL 22 1/2 x 2 1/2		10				34
84	1 PL 22 1/2 x 2 1/2		10				34
85	1 PL 22 1/2 x 2 1/2		10				34
86	1 PL 22 1/2 x 2 1/2		10				34
87	1 PL 22 1/2 x 2 1/2		10				34
88	1 PL 22 1/2 x 2 1/2		10				34
89	1 PL 22 1/2 x 2 1/2		10				34
90	1 PL 22 1/2 x 2 1/2		10				34
91	1 PL 22 1/2 x 2 1/2		10				34
92	1 PL 22 1/2 x 2 1/2		10				34
93	1 PL 22 1/2 x 2 1/2		10				34
94	1 PL 22 1/2 x 2 1/2		10				34
95	1 PL 22 1/2 x 2 1/2		10				34
96	1 PL 22 1/2 x 2 1/2		10				34
97	1 PL 22 1/2 x 2 1/2		10				34
98	1 PL 22 1/2 x 2 1/2		10				34
99	1 PL 22 1/2 x 2 1/2		10				34
100	1 PL 22 1/2 x 2 1/2		10				34
101	1 PL 22 1/2 x 2 1/2		10				34
102	1 PL 22 1/2 x 2 1/2		10				34
103	1 PL 22 1/2 x 2 1/2		10				34
104	1 PL 22 1/2 x 2 1/2		10				34
105	1 PL 22 1/2 x 2 1/2		10				34
106	1 PL 22 1/2 x 2 1/2		10				34
107	1 PL 22 1/2 x 2 1/2		10				34
108	1 PL 22 1/2 x 2 1/2		10				34
109	1 PL 22 1/2 x 2 1/2		10				34
110	1 PL 22 1/2 x 2 1/2		10				34
111	1 PL 22 1/2 x 2 1/2		10				34
112	1 PL 22 1/2 x 2 1/2		10				34
113	1 PL 22 1/2 x 2 1/2		10				34
114	1 PL 22 1/2 x 2 1/2		10				34
115	1 PL 22 1/2 x 2 1/2		10				34
116	1 PL 22 1/2 x 2 1/2		10				34
117	1 PL 22 1/2 x 2 1/2		10				34
118	1 PL 22 1/2 x 2 1/2		10				34
119	1 PL 22 1/2 x 2 1/2		10				34
120	1 PL 22 1/2 x 2 1/2		10				34
121	1 PL 22 1/2 x 2 1/2		10				34
122	1 PL 22 1/2 x 2 1/2		10				34
123	1 PL 22 1/2 x 2 1/2		10				34
124	1 PL 22 1/2 x 2 1/2		10				34
125	1 PL 22 1/2 x 2 1/2		10				34
126	1 PL 22 1/2 x 2 1/2		10				34
127	1 PL 22 1/2 x 2 1/2		10				34
128	1 PL 22 1/2 x 2 1/2		10				34
129	1 PL 22 1/2 x 2 1/2		10				34
130	1 PL 22 1/2 x 2 1/2		10				34

NOTES:  
SPECIFICATIONS: Maine State Highway Commission 1945 and Special Provisions  
MATERIAL: O.H. Steel A.S.T.M. A7-52T  
RIVETS: 7/8" HOLES: 1 1/8" Unless noted.  
WORKMANSHIP: Holes in material thicker than the diameter of the rivet shall be drilled.  
Holes in main material, including holes of splices, in bearing stiffeners and splice plates to be subpunched or subdrilled 1/4" and reamed to size.  
Holes marked RT to be subpunched or subdrilled 1/4" and reamed to size to a metal template.  
Holes marked RA to be subpunched or subdrilled 1/4" and reamed to size while connecting members are assembled to cambered position. (See Sh. E102)  
Connecting members to be matchmarked.  
Fillers and splice plates under stiffeners to fit within 1/8" of flange angles.  
B.E. indicates bearing end of stiffeners.  
PRINT: Yes, except as shown in Section X  
SHOP CONTACT SURFACES: No

WORK WITH SHEET 101



LINE	ITEM	SHAPE	LENGTH	ASSEMBLING	REMARKS	ORDERED	CALCULATED
G4E							
G3E							
G2E							
G1E							

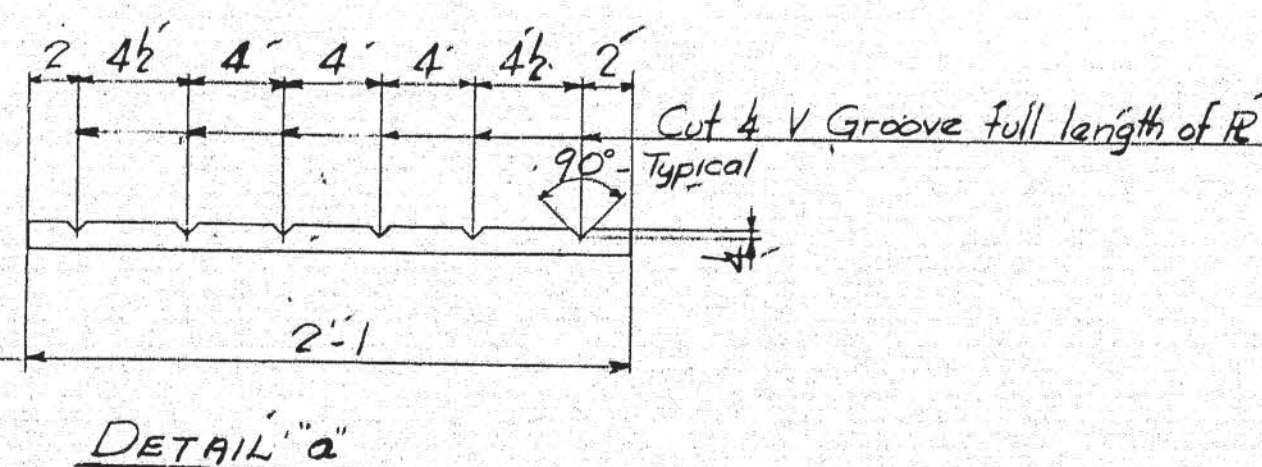


LINE	ITEM	SHAPE	LENGTH	ASSEMBLING	REMARKS	ORDERED	CALCULATED
G4E							
G3E							
G2E							
G1E							

LINE	ITEM	SHAPE	LENGTH	ASSEMBLING	REMARKS	ORDERED	CALCULATED
G4E							
G3E							
G2E							
G1E							



NOTE:  
Finger Plates on Dams Framing  
opposite each other must be  
cut from one plate to insure  
correct fitting of Fingers.  
Before cutting Finger Plates  
groove plates as shown in Detail



STATE OF MAINE  
STATE HIGHWAY COMMISSION  
BANGOR-BREWER BRIDGE  
OVER PENOBSCOT RIVER  
BANGOR, MAINE  
D-10 1500 3-53 PENCILER  
AMERICAN BRIDGE  
CORPORATION  
UNITED STATES OF AMERICA

DRAWINGS MADE AT TRENTON PLANT  
WORK FABRICATED AT AMBRIDGE PLANT  
IN CHARGE OF E.B. MARKS  
DRAW. MADE BY 5120C DATE 10-20-5  
DRAW. CHECKED BY 5120R DATE 2-15-5  
ORDER No. Q4150 SHEET No. 302AB

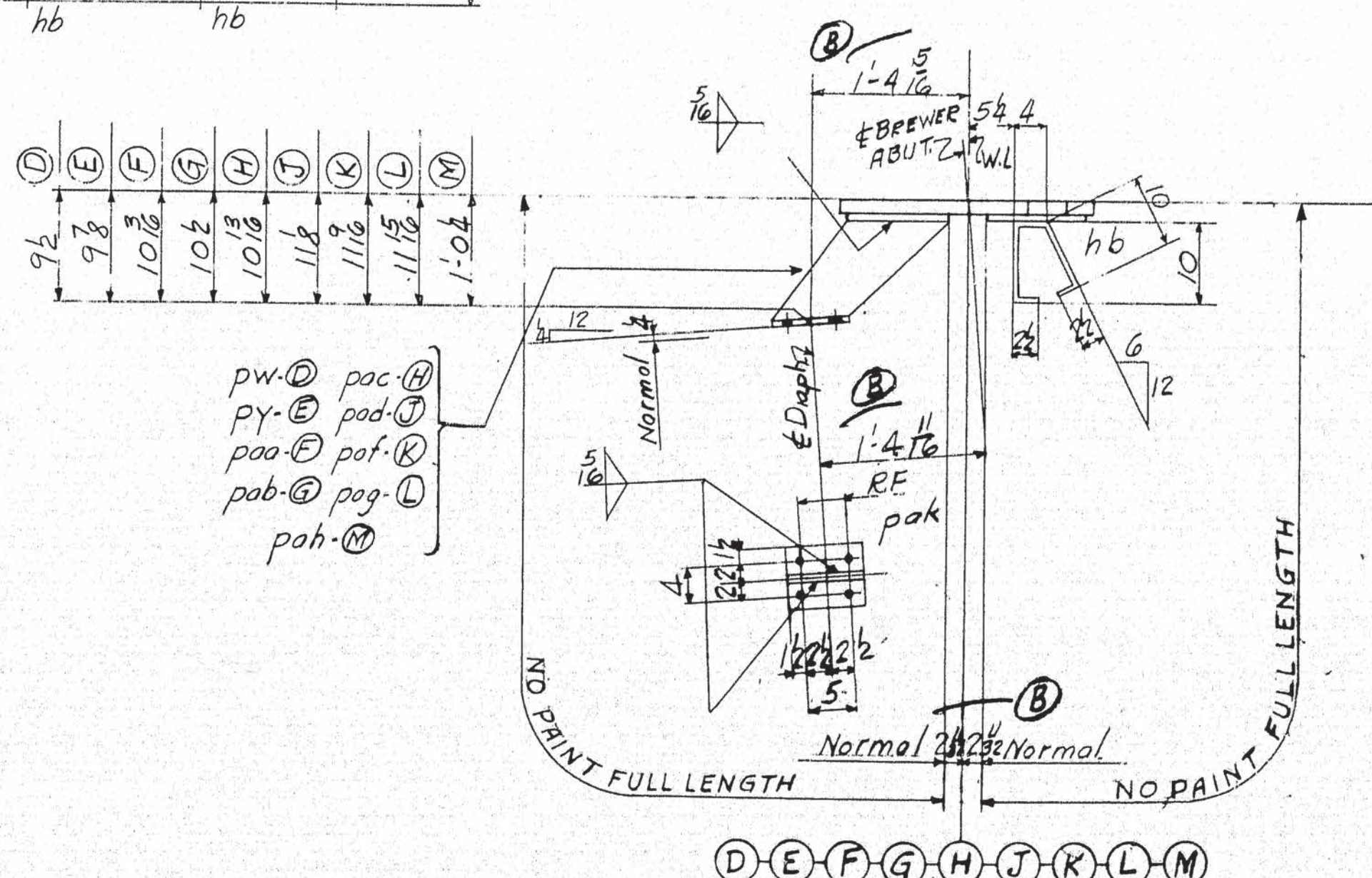
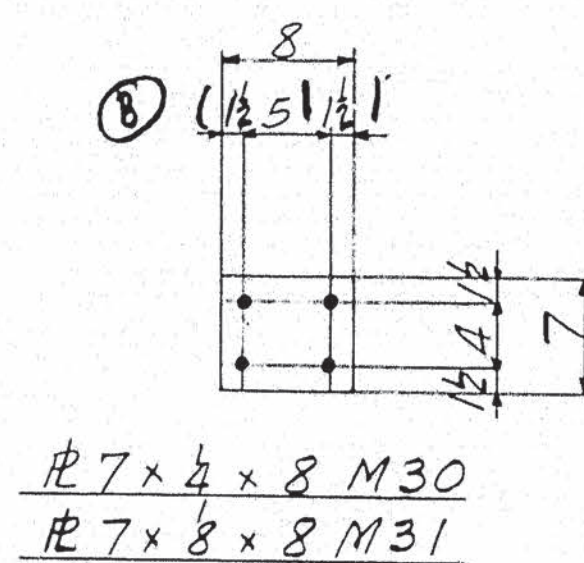
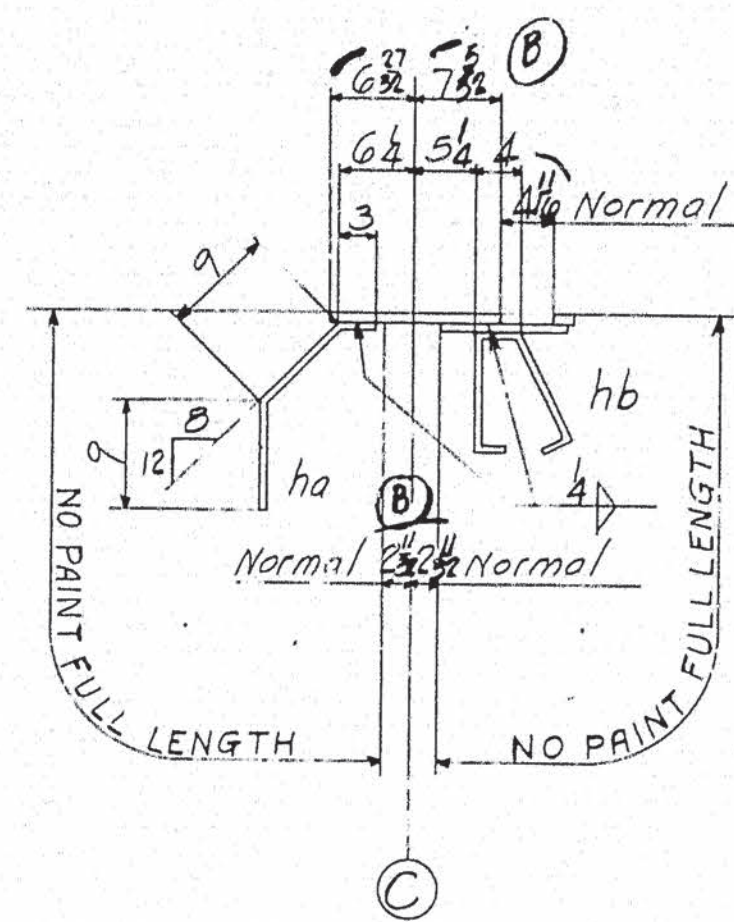
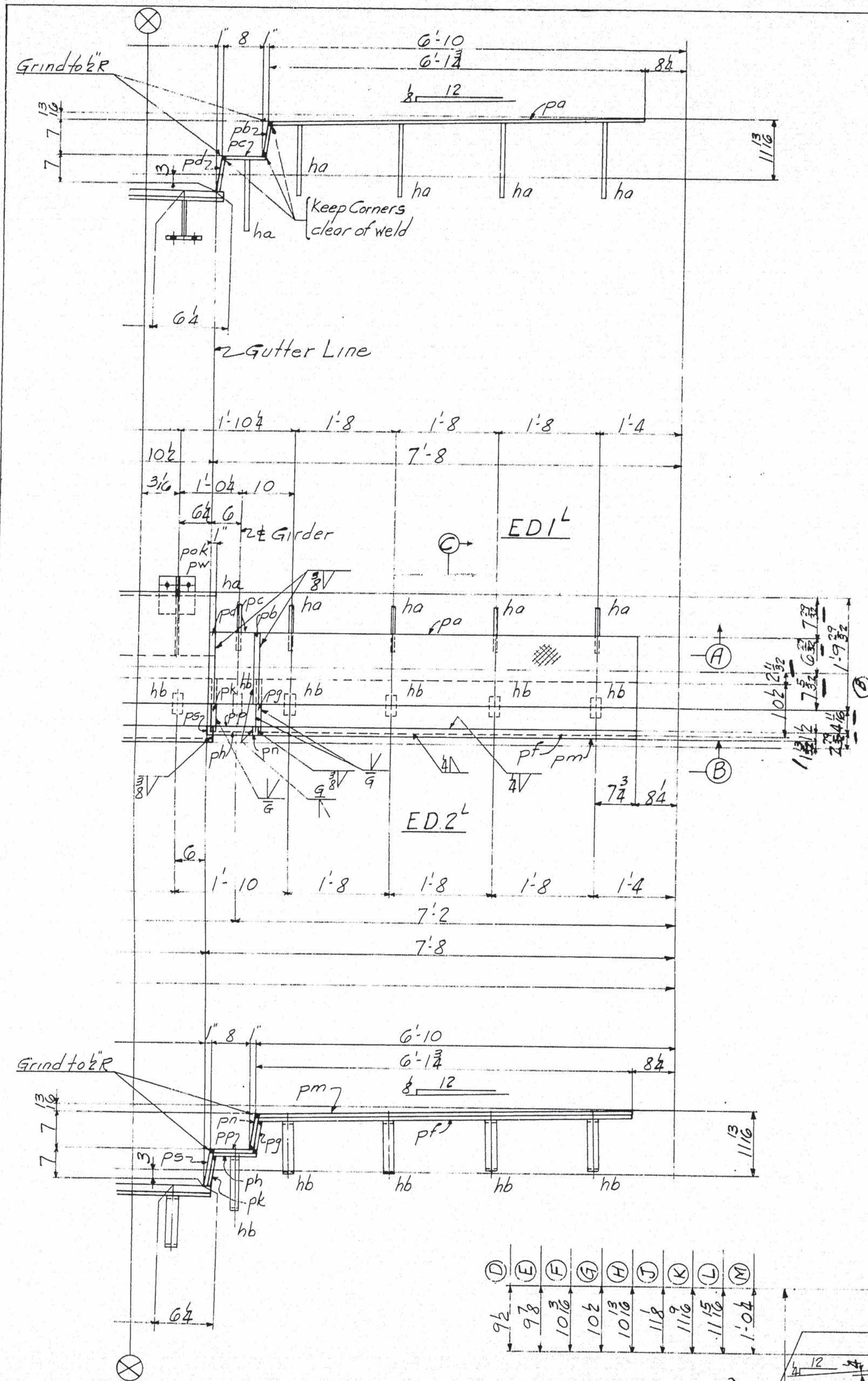
**PAINT:**  
**SHOP CONTACT SURFACES:**

F	
E	
D	
C	
B	
X	
REVISIONS	

WELD  
62-190



LINE	ITEM	MATERIAL	SHAPE	LENGTH	ASSEMBLY MARK	REMARKS	ORDERED	RIVETS		RIVETS		RIVETS		BOLTS		BOLTS		NUT	HEAD	BOLT	DIA	GRIP	NUT	HEAD	BOLT	DIA	GRIP	NUT	HEAD	BOLT	DIA	GRIP	NUT	HEAD	BOLT	DIA	GRIP	NUT	HEAD	BOLT	DIA	GRIP	NUT	HEAD	BOLT	DIA	GRIP	NUT	HEAD	BOLT	DIA	GRIP	NUT	HEAD	BOLT	DIA	GRIP	NUT	HEAD	BOLT	DIA	GRIP	NUT	HEAD	BOLT	DIA	GRIP	NUT	HEAD	BOLT	DIA	GRIP	NUT	HEAD	BOLT	DIA	GRIP	NUT	HEAD	BOLT	DIA	GRIP	NUT	HEAD	BOLT	DIA	GRIP	NUT	HEAD	BOLT	DIA	GRIP	NUT	HEAD	BOLT	DIA	GRIP	NUT	HEAD	BOLT	DIA	GRIP	NUT	HEAD	BOLT	DIA	GRIP	NUT	HEAD	BOLT	DIA	GRIP	NUT	HEAD	BOLT	DIA	GRIP	NUT	HEAD	BOLT	DIA	GRIP	NUT	HEAD	BOLT	DIA	GRIP	NUT	HEAD	BOLT	DIA	GRIP	NUT	HEAD	BOLT	DIA	GRIP	NUT	HEAD	BOLT	DIA	GRIP	NUT	HEAD	BOLT	DIA	GRIP	NUT	HEAD	BOLT	DIA	GRIP	NUT	HEAD	BOLT	DIA	GRIP	NUT	HEAD	BOLT	DIA	GRIP	NUT	HEAD	BOLT	DIA	GRIP	NUT	HEAD	BOLT	DIA	GRIP	NUT	HEAD	BOLT	DIA	GRIP	NUT	HEAD	BOLT	DIA	GRIP	NUT	HEAD	BOLT	DIA	GRIP	NUT	HEAD	BOLT	DIA	GRIP	NUT	HEAD	BOLT	DIA	GRIP	NUT	HEAD	BOLT	DIA	GRIP	NUT	HEAD	BOLT	DIA	GRIP	NUT	HEAD	BOLT	DIA	GRIP	NUT	HEAD	BOLT	DIA	GRIP	NUT	HEAD	BOLT	DIA	GRIP	NUT	HEAD	BOLT	DIA	GRIP	NUT	HEAD	BOLT	DIA	GRIP	NUT	HEAD	BOLT	DIA	GRIP	NUT	HEAD	BOLT	DIA	GRIP	NUT	HEAD	BOLT	DIA	GRIP	NUT	HEAD	BOLT	DIA	GRIP	NUT	HEAD	BOLT	DIA	GRIP	NUT	HEAD	BOLT	DIA	GRIP	NUT	HEAD	BOLT	DIA	GRIP	NUT	HEAD	BOLT	DIA	GRIP	NUT	HEAD	BOLT	DIA	GRIP	NUT	HEAD	BOLT	DIA	GRIP	NUT	HEAD	BOLT	DIA	GRIP	NUT	HEAD	BOLT	DIA	GRIP	NUT	HEAD	BOLT	DIA	GRIP	NUT	HEAD	BOLT	DIA	GRIP	NUT	HEAD	BOLT	DIA	GRIP	NUT	HEAD	BOLT	DIA	GRIP	NUT	HEAD	BOLT	DIA	GRIP	NUT	HEAD	BOLT	DIA	GRIP	NUT	HEAD	BOLT	DIA	GRIP	NUT	HEAD	BOLT	DIA	GRIP	NUT	HEAD	BOLT	DIA	GRIP	NUT	HEAD	BOLT	DIA	GRIP	NUT	HEAD	BOLT	DIA	GRIP	NUT	HEAD	BOLT	DIA	GRIP	NUT	HEAD	BOLT	DIA	GRIP	NUT	HEAD	BOLT	DIA	GRIP	NUT	HEAD	BOLT	DIA	GRIP	NUT	HEAD	BOLT	DIA	GRIP	NUT	HEAD	BOLT	DIA	GRIP	NUT	HEAD	BOLT	DIA	GRIP	NUT	HEAD	BOLT	DIA	GRIP	NUT	HEAD	BOLT	DIA	GRIP	NUT	HEAD	BOLT	DIA	GRIP	NUT	HEAD	BOLT	DIA	GRIP	NUT	HEAD	BOLT	DIA	GRIP	NUT	HEAD	BOLT	DIA	GRIP	NUT	HEAD	BOLT	DIA	GRIP	NUT	HEAD	BOLT	DIA	GRIP	NUT	HEAD	BOLT	DIA	GRIP	NUT	HEAD	BOLT	DIA	GRIP	NUT	HEAD	BOLT	DIA	GRIP	NUT	HEAD	BOLT	DIA	GRIP	NUT	HEAD	BOLT	DIA	GRIP	NUT	HEAD	BOLT	DIA	GRIP	NUT	HEAD	BOLT	DIA	GRIP	NUT	HEAD	BOLT	DIA	GRIP	NUT	HEAD	BOLT	DIA	GRIP	NUT	HEAD	BOLT	DIA	GRIP	NUT	HEAD	BOLT	DIA	GRIP	NUT	HEAD	BOLT	DIA	GRIP	NUT	HEAD	BOLT	DIA	GRIP	NUT	HEAD	BOLT	DIA	GRIP	NUT	HEAD	BOLT	DIA	GRIP	NUT	HEAD	BOLT	DIA	GRIP	NUT	HEAD	BOLT	DIA	GRIP	NUT	HEAD	BOLT	DIA	
------	------	----------	-------	--------	---------------	---------	---------	--------	--	--------	--	--------	--	-------	--	-------	--	-----	------	------	-----	------	-----	------	------	-----	------	-----	------	------	-----	------	-----	------	------	-----	------	-----	------	------	-----	------	-----	------	------	-----	------	-----	------	------	-----	------	-----	------	------	-----	------	-----	------	------	-----	------	-----	------	------	-----	------	-----	------	------	-----	------	-----	------	------	-----	------	-----	------	------	-----	------	-----	------	------	-----	------	-----	------	------	-----	------	-----	------	------	-----	------	-----	------	------	-----	------	-----	------	------	-----	------	-----	------	------	-----	------	-----	------	------	-----	------	-----	------	------	-----	------	-----	------	------	-----	------	-----	------	------	-----	------	-----	------	------	-----	------	-----	------	------	-----	------	-----	------	------	-----	------	-----	------	------	-----	------	-----	------	------	-----	------	-----	------	------	-----	------	-----	------	------	-----	------	-----	------	------	-----	------	-----	------	------	-----	------	-----	------	------	-----	------	-----	------	------	-----	------	-----	------	------	-----	------	-----	------	------	-----	------	-----	------	------	-----	------	-----	------	------	-----	------	-----	------	------	-----	------	-----	------	------	-----	------	-----	------	------	-----	------	-----	------	------	-----	------	-----	------	------	-----	------	-----	------	------	-----	------	-----	------	------	-----	------	-----	------	------	-----	------	-----	------	------	-----	------	-----	------	------	-----	------	-----	------	------	-----	------	-----	------	------	-----	------	-----	------	------	-----	------	-----	------	------	-----	------	-----	------	------	-----	------	-----	------	------	-----	------	-----	------	------	-----	------	-----	------	------	-----	------	-----	------	------	-----	------	-----	------	------	-----	------	-----	------	------	-----	------	-----	------	------	-----	------	-----	------	------	-----	------	-----	------	------	-----	------	-----	------	------	-----	------	-----	------	------	-----	------	-----	------	------	-----	------	-----	------	------	-----	------	-----	------	------	-----	------	-----	------	------	-----	------	-----	------	------	-----	------	-----	------	------	-----	------	-----	------	------	-----	------	-----	------	------	-----	------	-----	------	------	-----	------	-----	------	------	-----	------	-----	------	------	-----	------	-----	------	------	-----	------	-----	------	------	-----	------	-----	------	------	-----	------	-----	------	------	-----	------	-----	------	------	-----	------	-----	------	------	-----	------	-----	------	------	-----	------	-----	------	------	-----	------	-----	------	------	-----	------	-----	------	------	-----	------	-----	------	------	-----	------	-----	------	------	-----	------	-----	------	------	-----	------	-----	------	------	-----	------	-----	------	------	-----	------	-----	------	------	-----	------	-----	------	------	-----	------	-----	------	------	-----	------	-----	------	------	-----	------	-----	------	------	-----	------	-----	------	------	-----	------	-----	------	------	-----	------	-----	------	------	-----	------	-----	------	------	-----	--



NOTES:  
 Specifications: Maine State Highway Comm. 1945  
 & Special Provisions  
 Material: A.H. Steel ASTM A7-52T  
 Holes: 1/8"  
 Workmanship:  
 Holes marked RF to be subpunched 1/4" and reamed to size in the field.

LINE	ITEM	MATERIAL	SHAPE	LENGTH	ASSEMBLY MARK	REMARKS	ORDERED	ITEM	CALCULATED WEIGHT FOR ONE RAMP, PIER
1									
2									
3									
4									
5									
6									
7									
8									
9									
10									
11									
12									
13									
14									
15									
16									
17									
18									
19									
20									
21									
22									
23									
24									
25									
26									
27									
28									
29									
30									
31									
32									
33									
34									
35									
36									
37									
38									
39									
40									
41									
42									
43									
44									
45									
46									
47									
48									
49									
50									
51									
52									
53									
54									
55									
56									
57									

EXPANSION DAMS ED1L-ED2L-ED3-ED4

STATE OF MAINE  
 STATE HIGHWAY COMMISSION  
 BANGOR-BREWER BRIDGE  
 OVER PENOBSCOT RIVER  
 BANGOR, MAINE

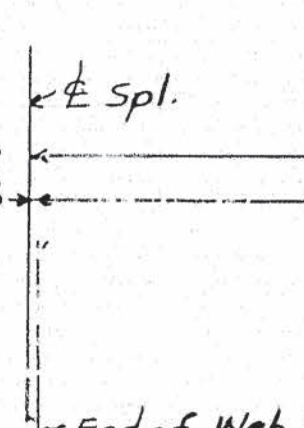
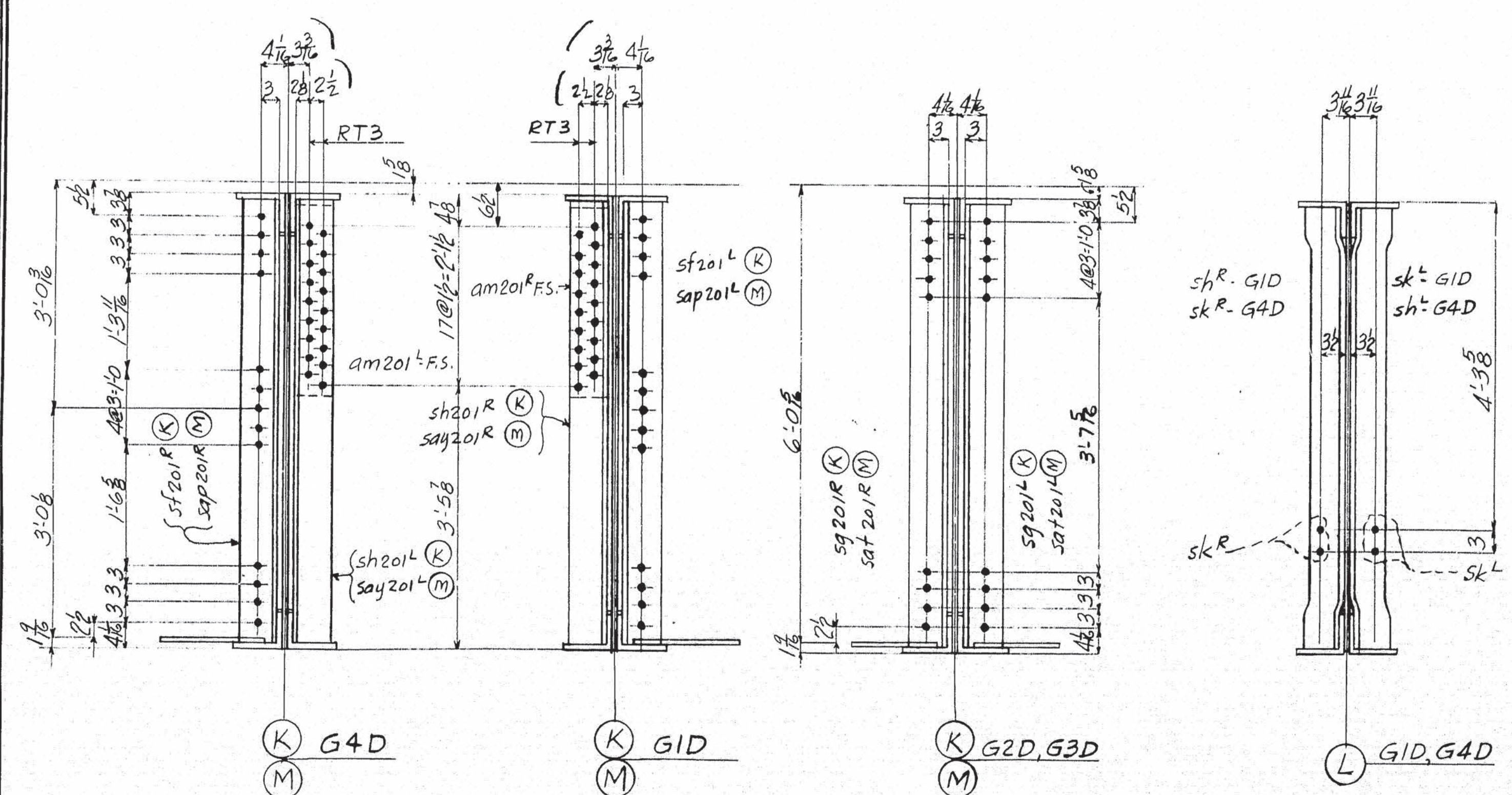
AMERICAN BRIDGE

DRAWINGS MADE AT TRENTON PLANT  
 WORK FABRICATED AT AMBRIDGE PLANT  
 IN CHARGE OF E.B. MARKS  
 DRAW. MADE BY: 6420 DATE: 10-23-53  
 DRAW. CHECKED BY: 6420 DATE: 2-15-54  
 ORDER No. Q4150 SHEET No. 302B

MR. 303

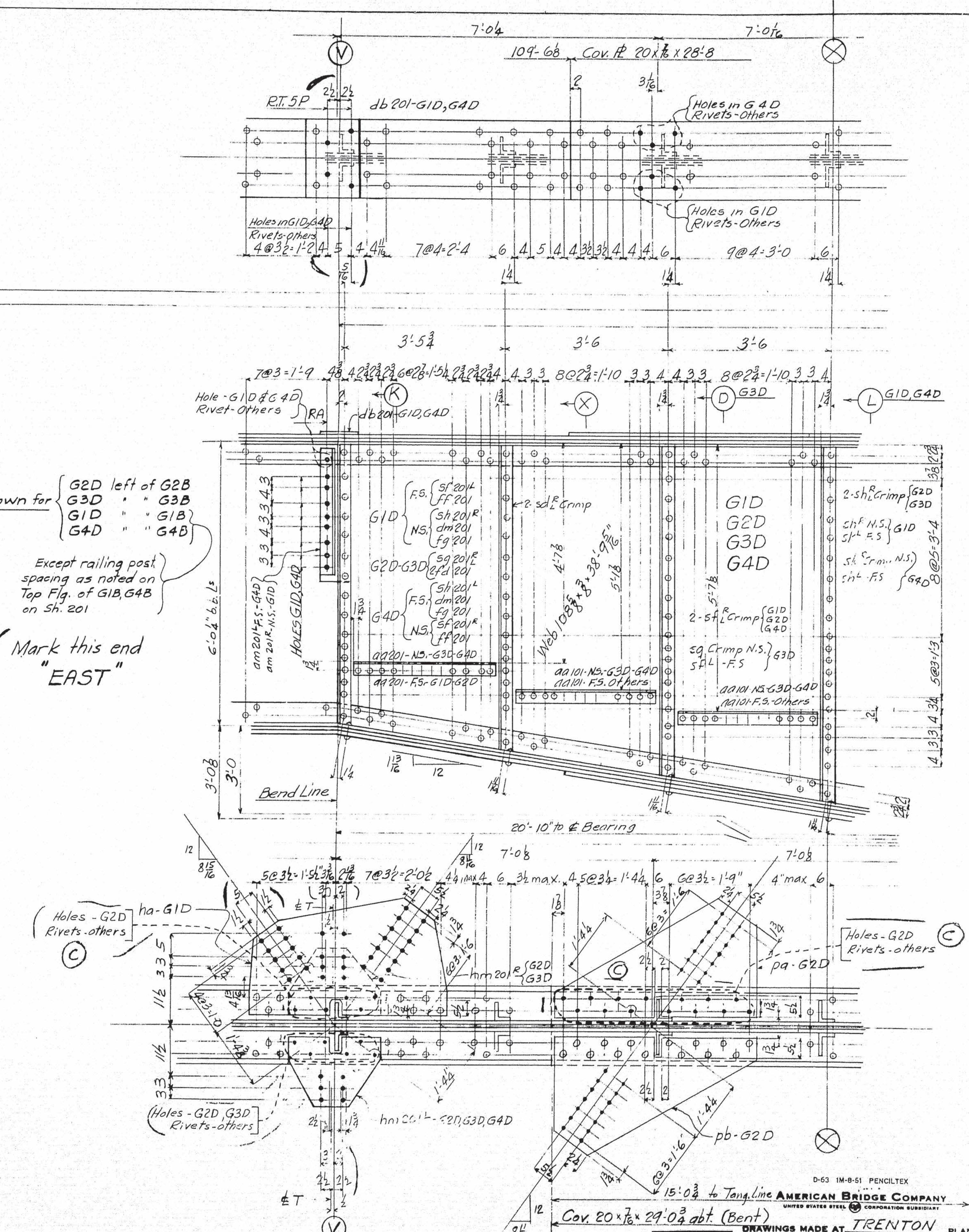
62-191 Weld





Except railing pos.  
spacing as noted on  
Top Flg. of GIB, G4  
on Sh. 201

B — Mark this end  
"EAST"



STATE OF MAINE  
STATE HIGHWAY COMMISSION  
BANGOR BREWER BRIDGE  
PENOBSCOT RIVER  
BANGOR MAINE

15'-0"  $\frac{3}{8}$  to Tang Line  
29'-0" dbt (Bent)

D-63 1M-B-51 PENCILTEX  
AMERICAN BRIDGE COMPANY  
UNITED STATES STEEL CORPORATION SUBSIDIARY

DRAWINGS MADE AT TRENTON PLANT  
WORK FABRICATED AT AMBRIDGE PLANT  
IN CHARGE OF E.B. MARKS  
DRAW. MADE BY \_\_\_\_\_ DATE 2-18-54  
DRAW. CHECKED BY FEL DATE 2-18-54

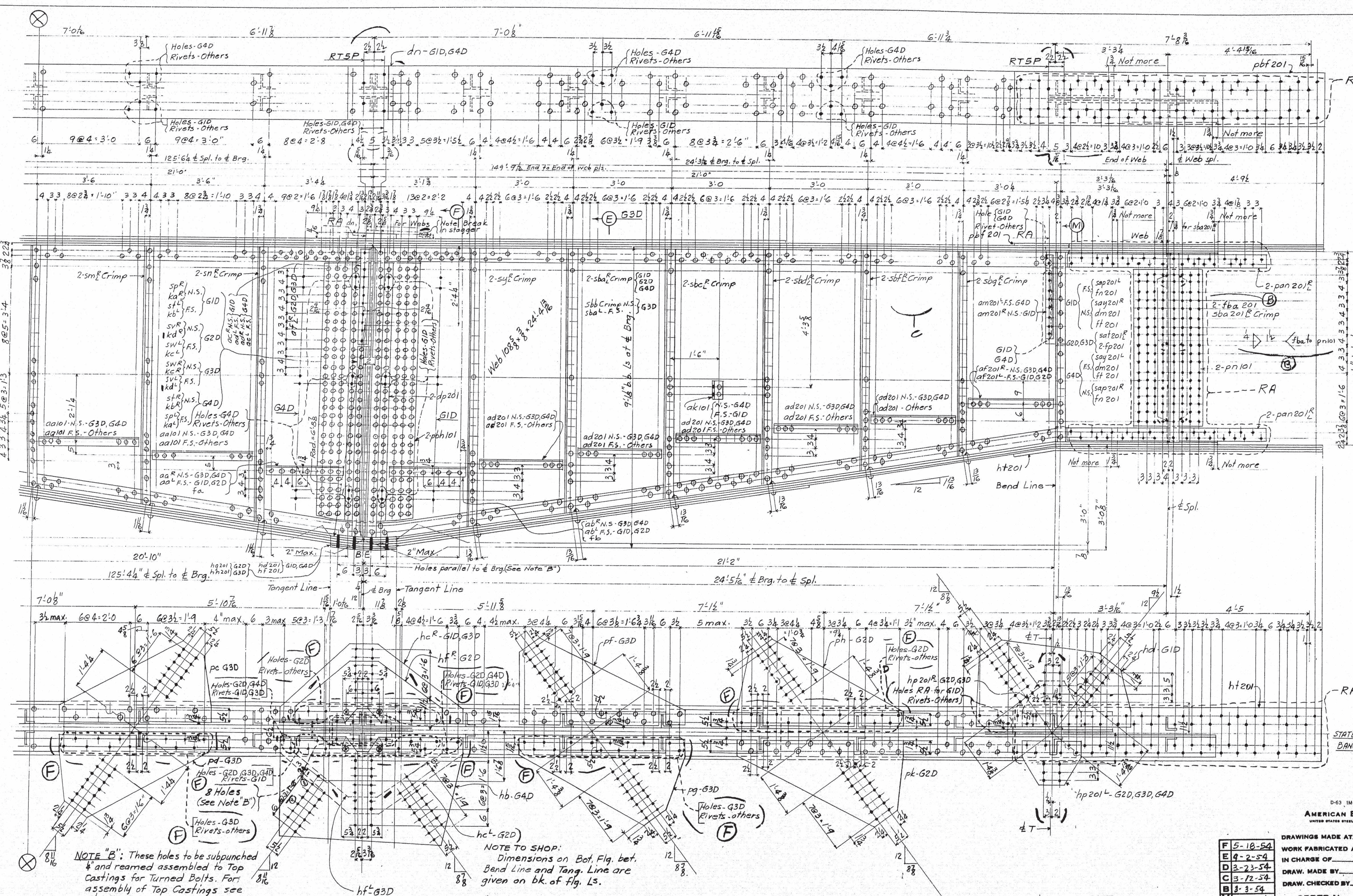
F	
E	
D	
C	5-18-54
B	3-12-54
<input checked="" type="checkbox"/> A	2-22-54
REVISIONS	

ORDER No. 04150  
SHEET No. 20195

Adt. Bill WELD

62-192





NOTE "B": These holes to be subpunched & reamed assembled to Top Castings for Turned Bolts. For assembly of Top Castings see Sh. E102

NOTE TO SHOP: Dimensions on Bot. Flg. bet. Bend Line and Tang. Line are given on bk. of Flg. Ls.

STATE OF MAINE  
STATE HIGHWAY COMMISSION  
DANFOR-BREWER BRIDGE  
PENOBSCOT RIVER  
BANGOR, MAINE

D-63 1M-8-51 PENCILTEX  
AMERICAN BRIDGE COMPANY  
UNITED STATES STEEL CORPORATION SUBSIDIARY  
DRAWINGS MADE AT TRENTON PLANT  
WORK FABRICATED AT AMERIDGE PLANT  
IN CHARGE OF MARKS  
DRAW. MADE BY RNS DATE  
DRAW. CHECKED BY FEL DATE 2-18-54  
ORDER NO. Q4150 SHEET NO. 401BC

F 5-18-54
E 9-2-54
D 3-23-54
C 3-12-54
B 3-3-54
A 2-22-54
REVISIONS

62-193



AMERICAN BRIDGE

UNITED STATES STEEL COMPANY

LINE	ITEM	MATERIAL	SHAPE	LENGTH	ASSEMBLY	REMARKS	ORDERED	CALCULATED
1								
2								
3								
4								
5								
6								
7								
8								
9								
10								
11								
12								
13								
14								
15								
16								
17								
18								
19								
20								
21								
22								
23								
24								
25								
26								
27								
28								
29								
30								
31								
32								
33								
34								
35								
36								
37								
38								
39								
40								
41								
42								
43								
44								
45								
46								
47								
48								
49								
50								
51								
52								
53								
54								
55								
56								
57								
58								
59								
60								
61								
62								
63								
64								
65								
66								
67								

Sheet To T-1 = 246947

STATE OF MAINE  
STATE HIGHWAY COMMISSION  
BANGOR-BREWER BRIDGE  
PENOBSCOT RIVER  
BANGOR MAINE

AMERICAN BRIDGE  
UNITED STATES STEEL COMPANY

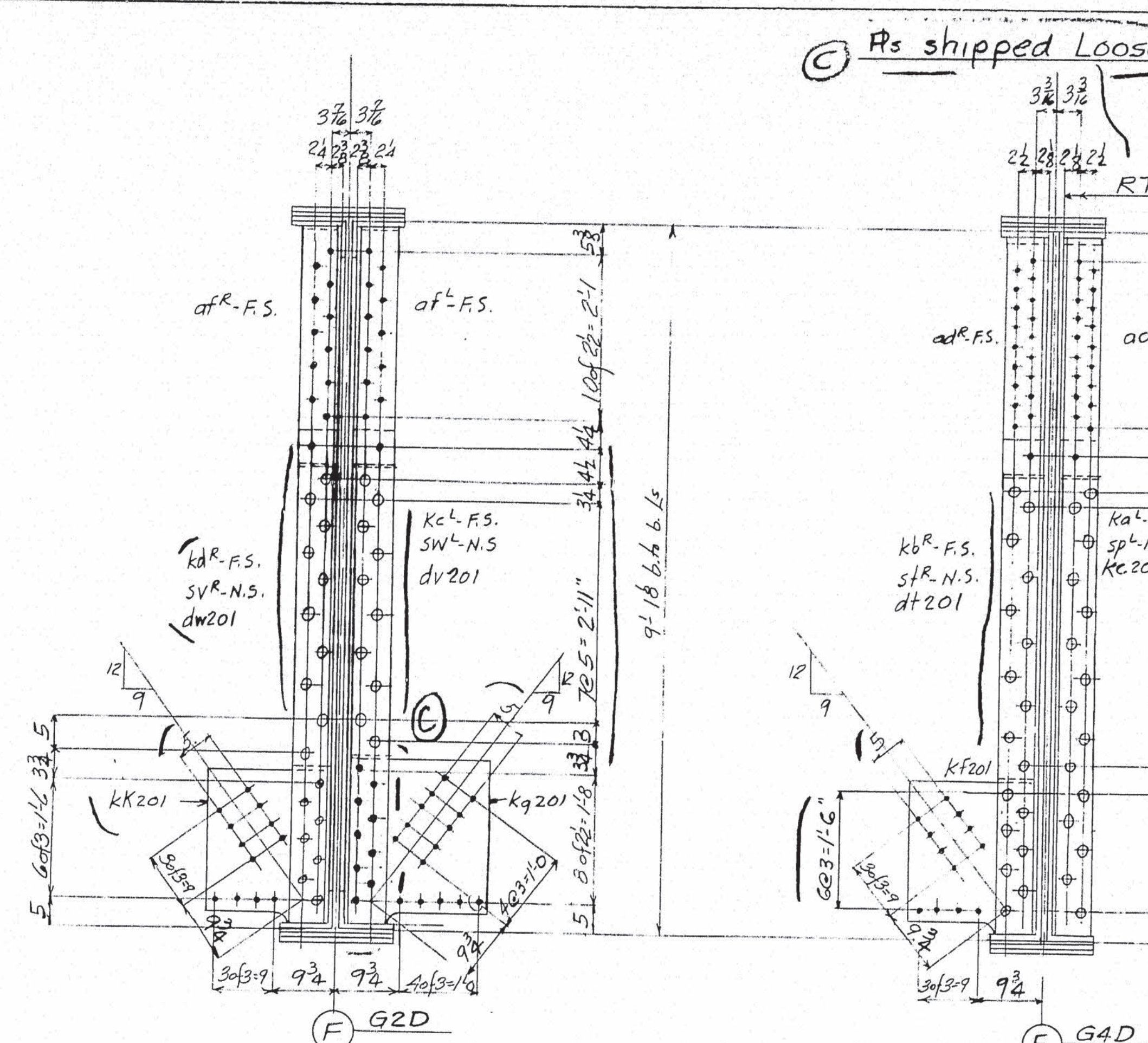
DRAWINGS MADE AT TRENTON PLANT  
WORK FABRICATED AT AMBRIDGE PLANT  
IN CHARGE OF E.B. MARKS

DRAW. MADE BY R.N.G. DATE 11-23-53  
DRAW. CHECKED BY FEL. DATE 2-18-54

ORDER NO. 4150 SHEET NO. 401C

REVISIONS
F
E
D
C 5-18-54
B 3-3-54
A 2-22-54

62-194

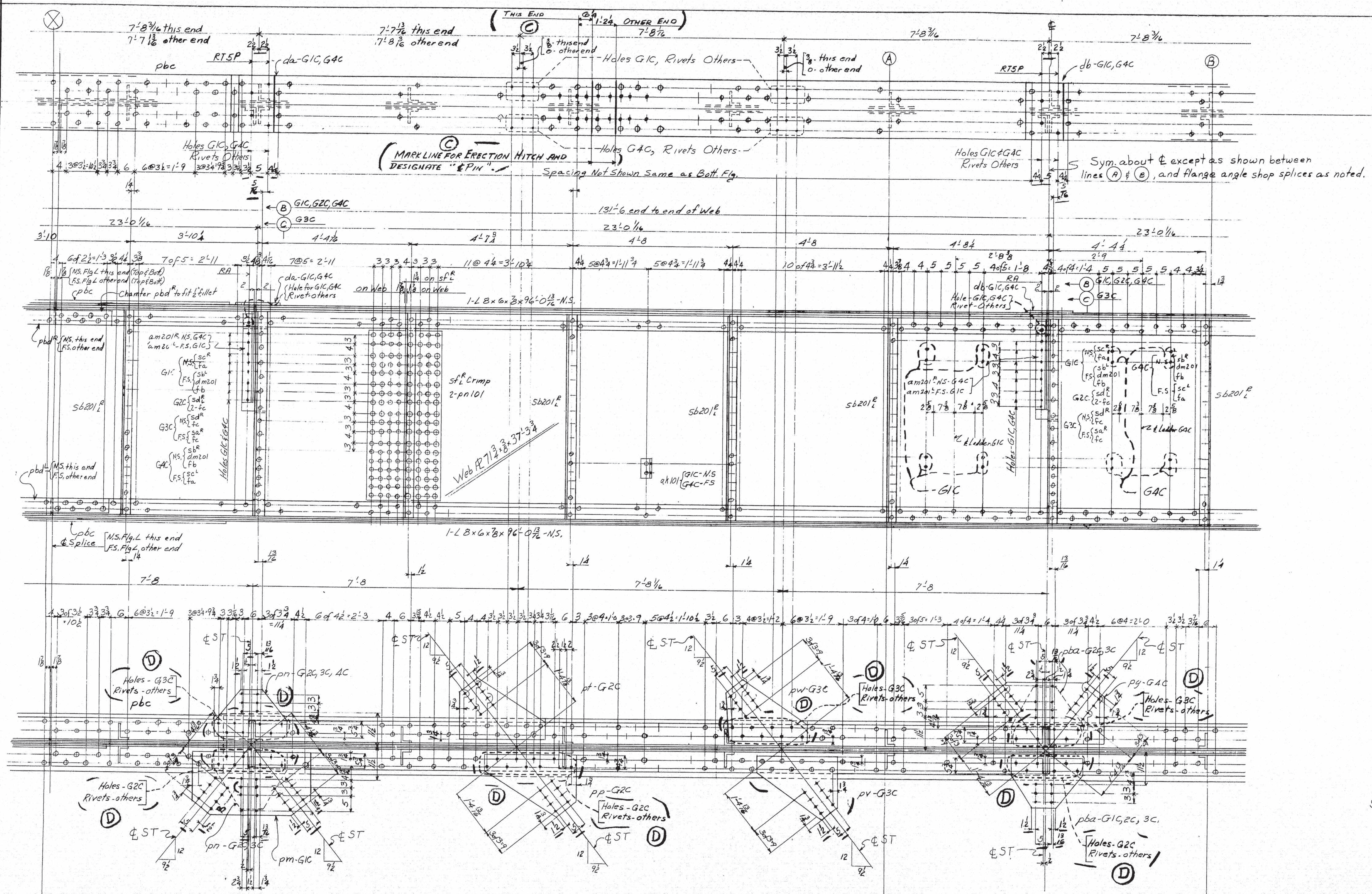








REV.	DATE	BY	CHK.	BOLTS		RIVETS	
				Qty	Size	Qty	Size
1							
2							
3							
4							
5							
6							
7							
8							
9							
10							
11							
12							
13							
14							
15							
16							
17							
18							
19							
20							
21							
22							
23							
24							
25							
26							
27							
28							
29							
30							
31							
32							
33							
34							
35							
36							
37							
38							
39							
40							
41							
42							
43							
44							
45							
46							
47							
48							
49							
50							
51							
52							
53							
54							
55							
56							
57							
58							
59							
60							
61							
62							
63							
64							
65							
66							
67							
68							
69							
70							
71							
72							
73							
74							
75							
76							
77							
78							
79							
80							
81							
82							
83							
84							
85							
86							
87							
88							
89							
90							
91							
92							
93							
94							
95							
96							
97							
98							
99							
100							



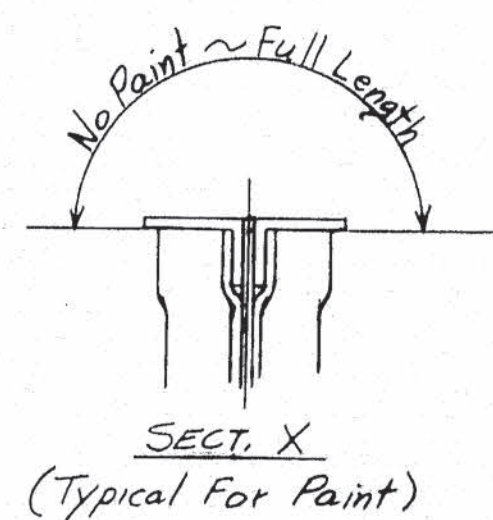
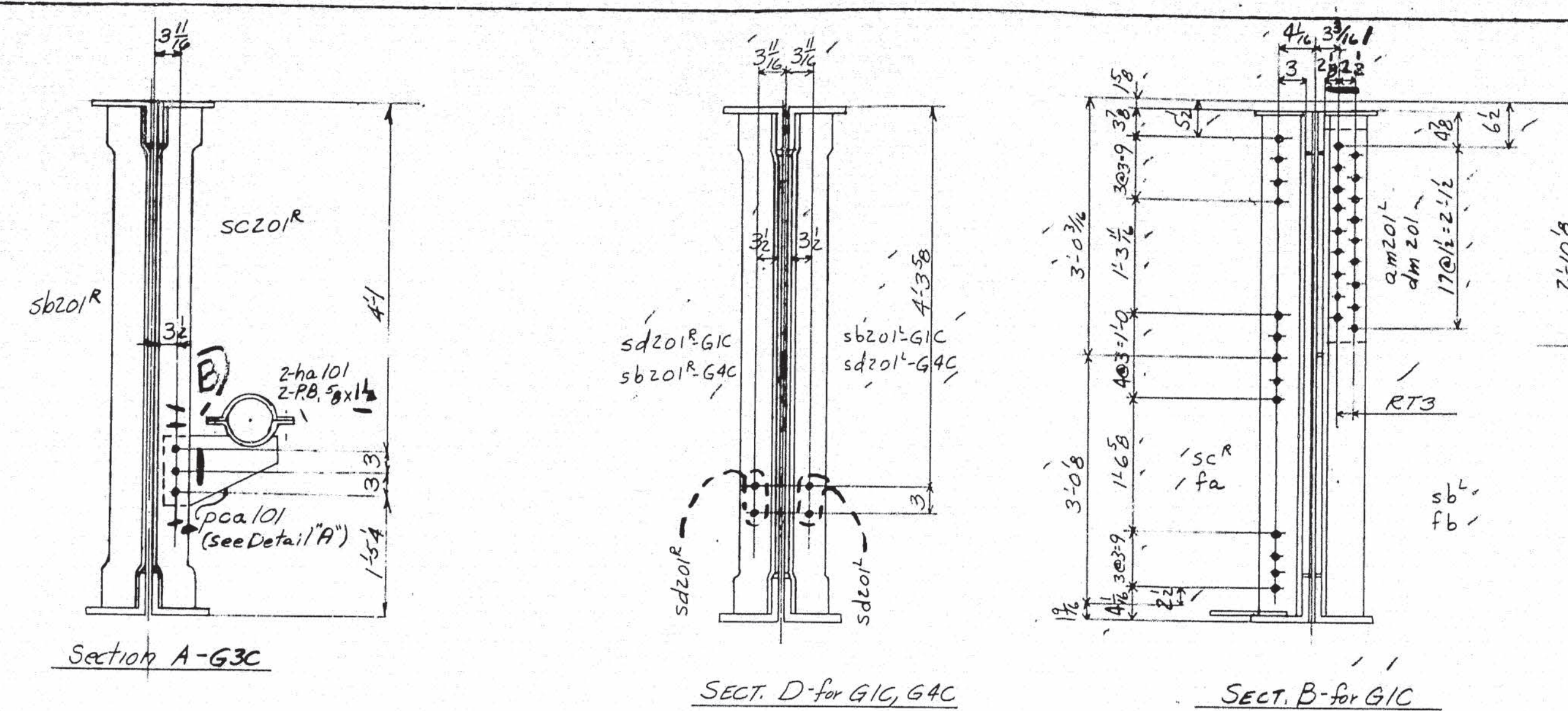
STATE OF MAINE  
STATE HIGHWAY COMMISSION  
BANGOR - BREWER BRIDGE  
PENOBSCOT RIVER  
BANGOR, MAINE

AMERICAN BRIDGE  
DIVISION  
UNITED STATES STEEL CORPORATION

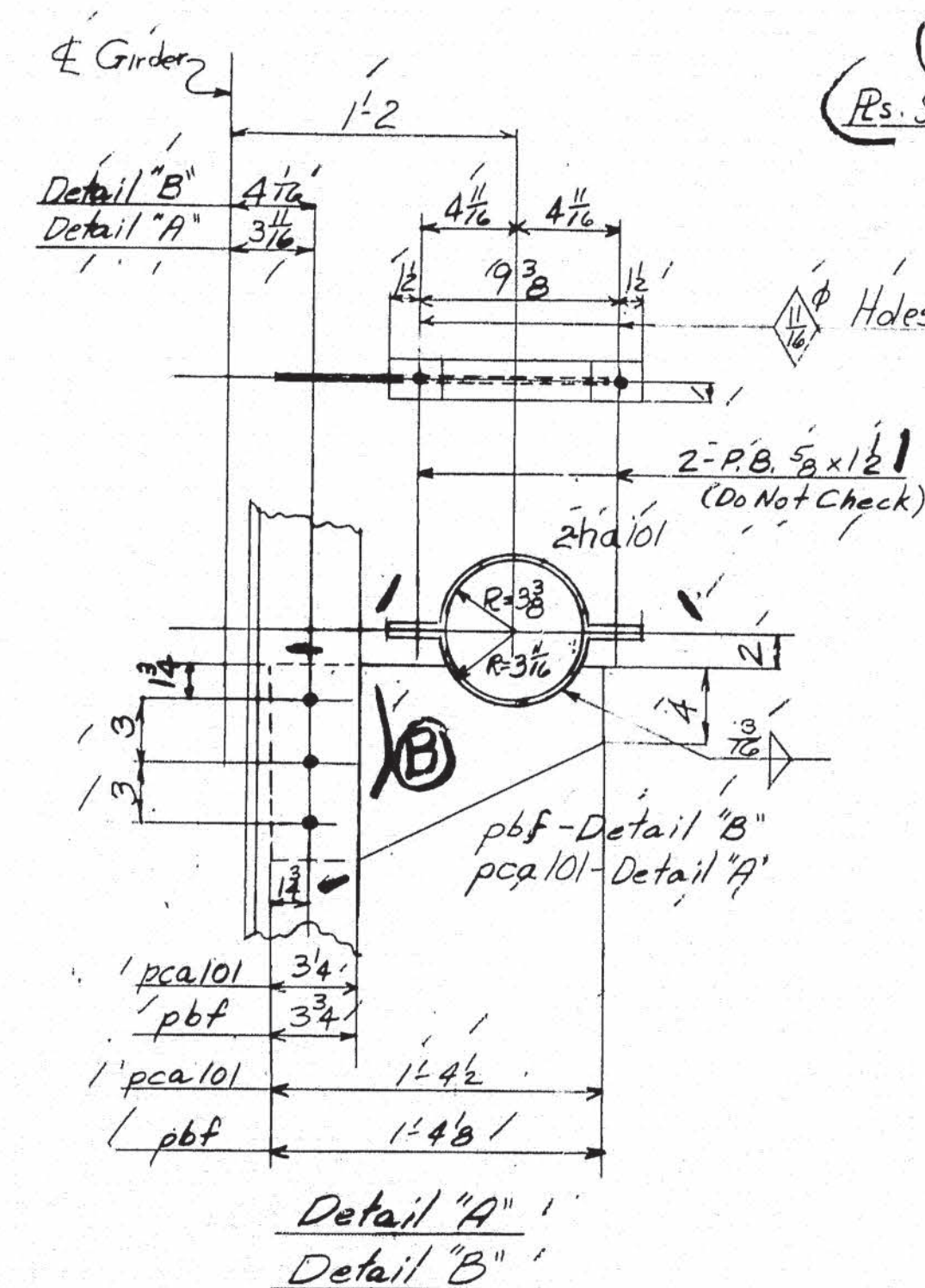
DRAWINGS MADE AT Trenton PLANT  
WORK FABRICATED AT Amburge PLANT  
IN CHARGE OF E. B. Marks  
DRAW. MADE BY RNG DATE 7-15-53  
DRAW. CHECKED BY FEL DATE 8-15-54  
ORDER No. Q 4150 SHEET No. 501 BC

62-186





74	2 R	174 %	2 1/2	Pk G2C	S	MET
75	2 R	174 %	2 1/2	Pk G3C	S	WEIG-
76	2 R	222 %	2 6/2	ph G3C	S	INCLUD
77	2 R	222 %	2 6/2	p9 G2C	S	WITH
78	2 R	174 %	2 2	pn G2C	S	BASEMA
79	2 R	174 %	2 2	pn G3C	S	PIECES P
80	1 R	174 %	2 0 2	pkz G2C	S	CASPERA
81	1 R	174 %	2 0 2	.Pbz G3C	S	GLOBE
82						
83						
84						
85						



NOTES:

SPECIFICATIONS- Maine State Highway Commission 1945 and Special Provisions

MATERIAL- O.H. Steel ASTM A7-52T

RIVETS -

WORKMANSHIP- Holes in material thicker than the diameter of the rivet shall be drilled.

Holes in main material, including holes at splices, in bearing stiffeners, and splice plates to be subpunched or subdrilled 6" and reamed to size.

Holes marked RT to be subpunched or subdrilled  $\frac{1}{4}$ " and reamed to size to a metal templet.

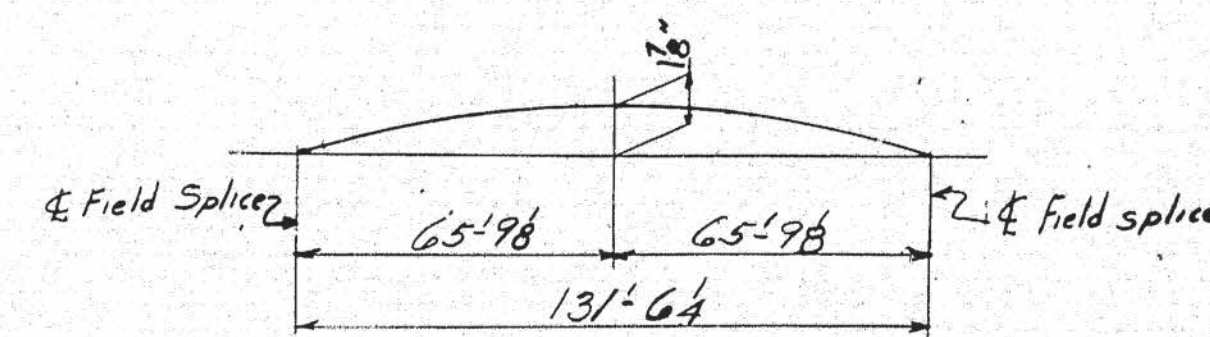
Holes marked RA to be subpunched or subdrilled .4" and reamed to size while connecting members are assembled.

to cambered position. (See Sheet E102)  
Connecting members to be matchmarked.

Fillers and splice plates under stiffeners to fit within  $\frac{1}{8}$  of flange angles.

PAINT - B.E. indicates bearing end of stiffeners,  
Yes, Except as shown in Section XI.

SHOP CONTACT SURFACES - NC



### CAMBER DIAGRAM

LIFTING WT. = 29 TONS

Sheet Total = 214,134.

AMERICAN BRIDGE

STATE OF MAINE  
STATE HIGHWAY COMMISSION  
BANGOR - BREWER BRIDGE  
PENOBSCOT RIVER  
BANGOR, MAINE

F		DRAWINGS MADE AT	<u>17070101</u>	PLAN
E		WORK FABRICATED AT	<u>Ambridge</u>	PLAN
D		IN CHARGE OF	<u>E.B. Marks</u>	
C		DRAW. MADE BY	<u>RNG</u>	DATE <u>7-22-53</u>
B	<u>5-10-54</u>	DRAW. CHECKED BY	<u>FEL</u>	DATE <u>7-16-54</u>
X	<u>2-22-55</u>	ORDER No.		SHEET No.
REVISIONS		<u>Q4150</u>		<u>501C</u>

Adv. B.

Valdieu

62-197



